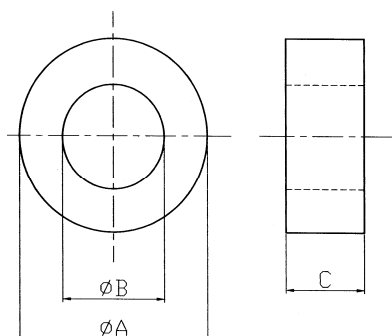


### H cores



#### CORE SETS

#### CORE DIMENSIONS (mm)

Spray paint	Dimensions (mm)		
	$\phi A$	$\phi B$	C
Uncoat	$36.0 \pm 0.8$	$23.0 \pm 0.6$	$15.0 \pm 0.5$
Coat	37.3max	21.9min	15.9max

#### Effective core parameters

SYMBOL	PARAMETER	VALUE	UNIT
Ve	effective volume	9031.4	mm <sup>3</sup>
le	effective length	94.2	mm
Ae	effective area	95.9	mm <sup>2</sup>
Wt	mass of core set	≈47	g

#### Characteristic

Grade	AL (nH/N <sup>2</sup> )	Z (Ω)
	f=100kHz U=0.25V N=10Ts, $\Phi 0.35$ mm	f=25MHz N=1Ts $\Phi 1.0 \times 100$ mm T=25±2°C
DN150H	2000 ± 25%	38 min
DN85H	1140 ± 25%	35 min
DN65H	870 ± 25%	30 min
DN10H	130 ± 25%	20 min