



技术参数

technical parameter

DM-S1S1-2145-I2201

1、电气性能 Electrical Characteristics

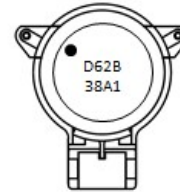
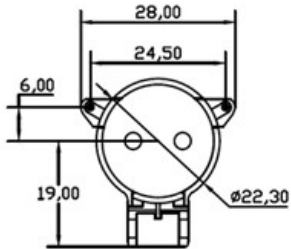
工程 /Stage	测定 /Test	频率/Frequency[MHz]	1960	2110	2145	2180	2330	检验频次 /Check frequency
		确认频率/Frequency range	←—————→					
调试/Tuning	P2-1	插入损耗/Insertion Loss P1-2[dB]		0.16 MAX				产线全数检查 /Full inspection of production line
		隔离度/Isolation P2-1[dB]	15.5 MIN	28.5 MIN			15.5 MIN	
		输入回波损耗/Return Loss In[dB]		28.8 MIN				
		输出回波损耗/Return Loss Out[dB]		28.8 MIN				
复测/Remeasurement	P2-1	插入损耗/INS LOSS1-2[dB]		0.165 MAX				产线全数检查 /Full inspection of production line
		隔离度/Isolation 2-1[dB]	15.2 MIN	28.2 MIN			15.2 MIN	
		输入回波损耗/Return Loss In[dB]		28.5 MIN				
		输出回波损耗/Return Loss Out[dB]		28.5 MIN				
		输入阻抗实部/Input SmithChart R[Ω]		47~51	48~51.5	48~52		
		输入阻抗虚部/Input SmithChart jx[jΩ]		-2~1	-1~2	-1~3		
		输出阻抗实部/Output SmithChart R[Ω]		47~51	48~51.5	48~53		
		输出阻抗虚部/Output SmithChart jx[jΩ]		-2~1	-1~2	-1~3		
		二次谐波抑制度/Second- harmonic suppression[dBc]		21 MIN				
三次谐波抑制度/Third- harmonic suppression[dBc]		12 MIN						
IMD [dBc]		-70dBc MAX※						
出货/Outgoing Inspection	P2-1	插入损耗/INS LOSS 1-2		0.17 MAX				按照 GB2828 标 准抽检 /Sampling inspection according to GB2828 standard
		隔离度/Isolation 2-1	15 MIN	28 MIN			15 MIN	
		输入回波损耗/Return Loss In[dB]		28 MIN				
		输出回波损耗/Return Loss Out[dB]		28 MIN				
		输入阻抗实部/Input SmithChart R[Ω]		47~51	48~51.5	48~52		
		输入阻抗虚部/Input SmithChart jx[jΩ]		-2~1	-1~2	-1~3		
		输出阻抗实部/Output SmithChart R[Ω]		47~51	48~51.5	48~53		
输出阻抗虚部/Output SmithChart jx[jΩ]		-2~1	-1~2	-1~3				



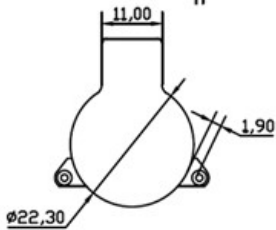
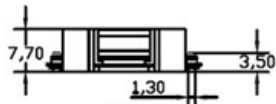
技术参数 technical parameter

DM-S1S1-2145-I2201

2、产品外形图 Product Drawing



- ① ● : Input Port
- ② "D": DMEGC Produce
- "62": Frequency Code
- "B": Production Year
- "3": Production Month
- "8": Production Day
- "A1": A--Day Shift Production
B--Night Shift Production
- 1--Network Analyzer No.



公差Tolerance: $\pm 0.2\text{mm}$
单位 Unit: mm

第 1 页