



技术参数

Technical parameter

DM-LM1030-8

1、电气性能 Electrical Characteristics

NO.	项目/Items	规格/Specification
5-1	额定电压/ Rated Voltage	2.0 Vrms Sin ewave
5-2	最大工作电压/ Max Operating Voltage	2.05 Vrms
5-3	电阻/ Resistance	23±4 Ohm
5-4	额定电流/ Rated Current	Max. 90 mArms
5-5	额定频率/ Rated Frequency	196 Hz
5-6	F0 点振动量/ Acceleration@F0	Min. 1.1Grms
5-7	频率特性/ Frequency Characteristics	196±10Hz Refer to Figure 1
5-8	上升时间/ Rising time	40ms Max from 0 to 50% normal acceleration
5-9	下降时间/ Falling time	50ms Max from 100% to 50% normal acceleration
5-10	噪音/ Noise	Max. 50 dB(A) (10cm distance from decibel meter Input Source : 196Hz, 2.0Vrms AC, Sinewave)
5-11	绝缘电阻/Insulation Resistance	Min. 10M ohm (100V DC input, between Case and FPC PAD)

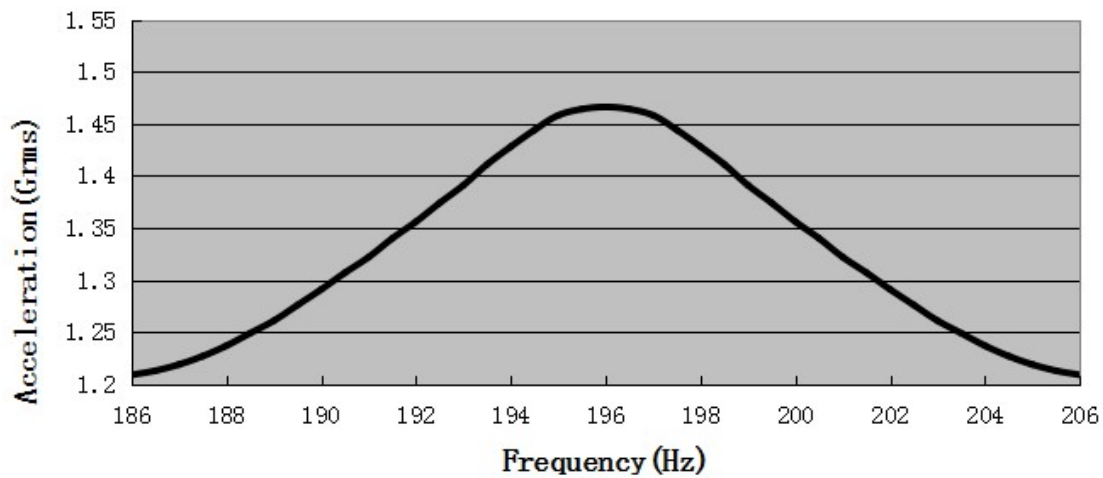


Figure 1. Frequency Response

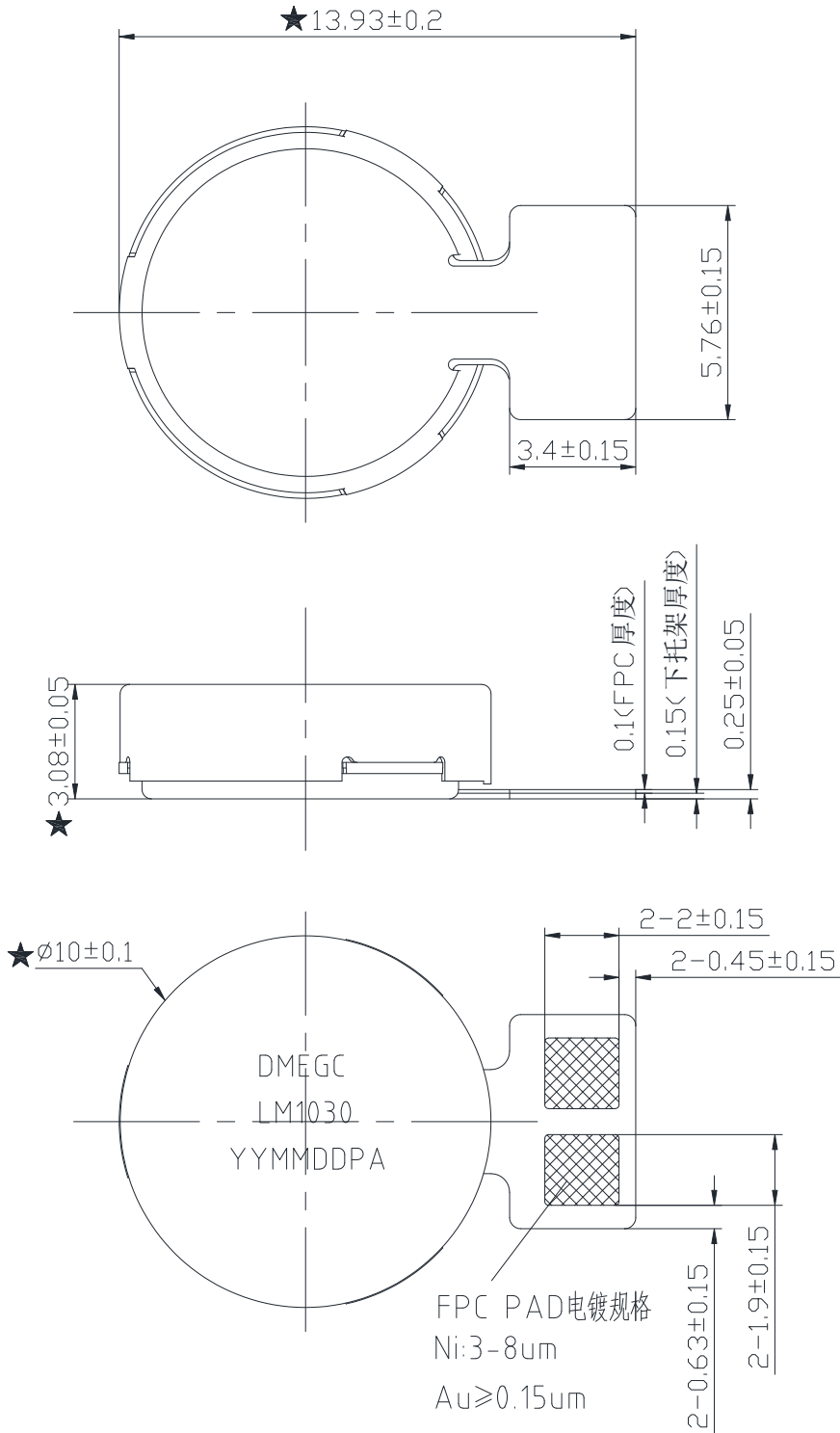


技术参数

Technical parameter

DM-LM1030-8

2、产品外形图 Product Outline Drawing



打码规则:

DMEGC: 生产商代号 LM1030: 马达型号 YYMMDDPA: 生产批次