



# 技术参数

## Technical parameter

DM-LM0825C-1

### 1、电气性能 Electrical Characteristics

序号 NO.	项目 Items	规格 Specification
5-1	额定电压/ Rated Voltage	1.2 Vrms
5-2	工作电压/ Operating Voltage Range	0.1~1.25 Vrms
5-3	电阻/ Resistance	20±4 Ohm
5-4	额定电流/ Rated Current	Max. 80 mArms
5-5	谐振频率 F0/ Resonance Frequency F0	240±10 Hz
5-6	F0 点振动量/ Acceleration @F0	Min 0.7 Grms
5-7	频率特性/ Frequency Characteristics	Refer to Figure 1
5-8	上升时间/ Rising time	50ms Max from 0 to 50% normal acceleration
5-9	下降时间/ Falling time	80ms Max from 100% to 50% normal acceleration
5-10	噪音/ Noise	Max. 50 dB(A) (10cm distance from decibel meter Input Source :Motor F0, 1.2Vrms AC, Sinewave)
5-11	绝缘电阻/Insulation Resistance	Min. 10M ohm (100V DC input, between Case and Spring)

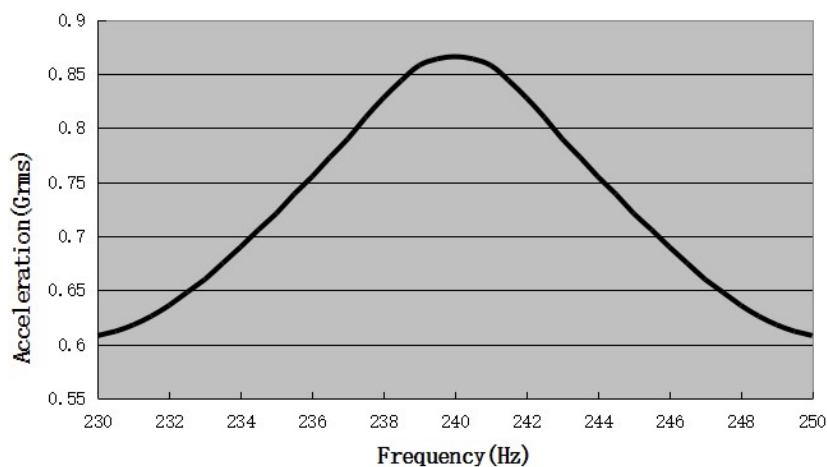
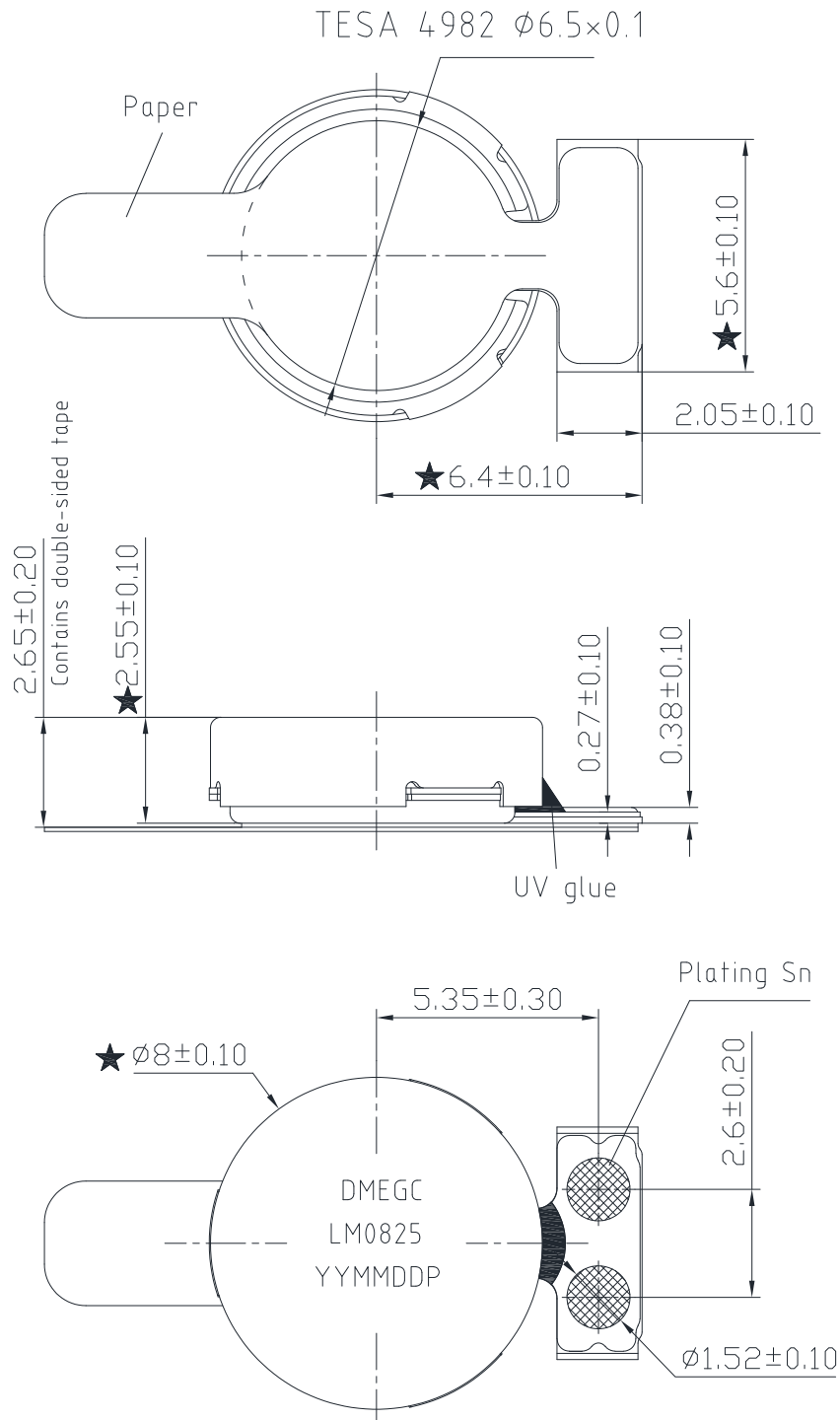


Figure 1. Frequency Response

### 2、产品外形图 Product Outline Drawing



Coding rules:

DMEGC: Manufacturer code LM0825: Motor model

YYMMDD: date P: Production line code