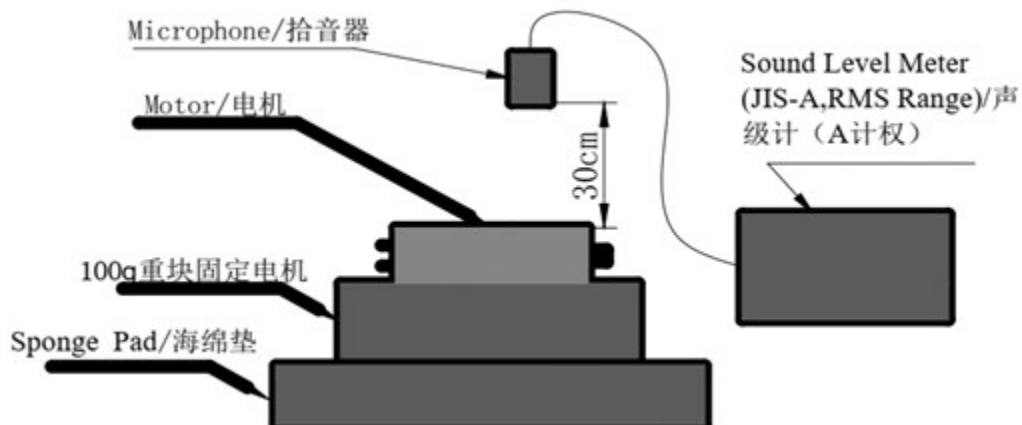
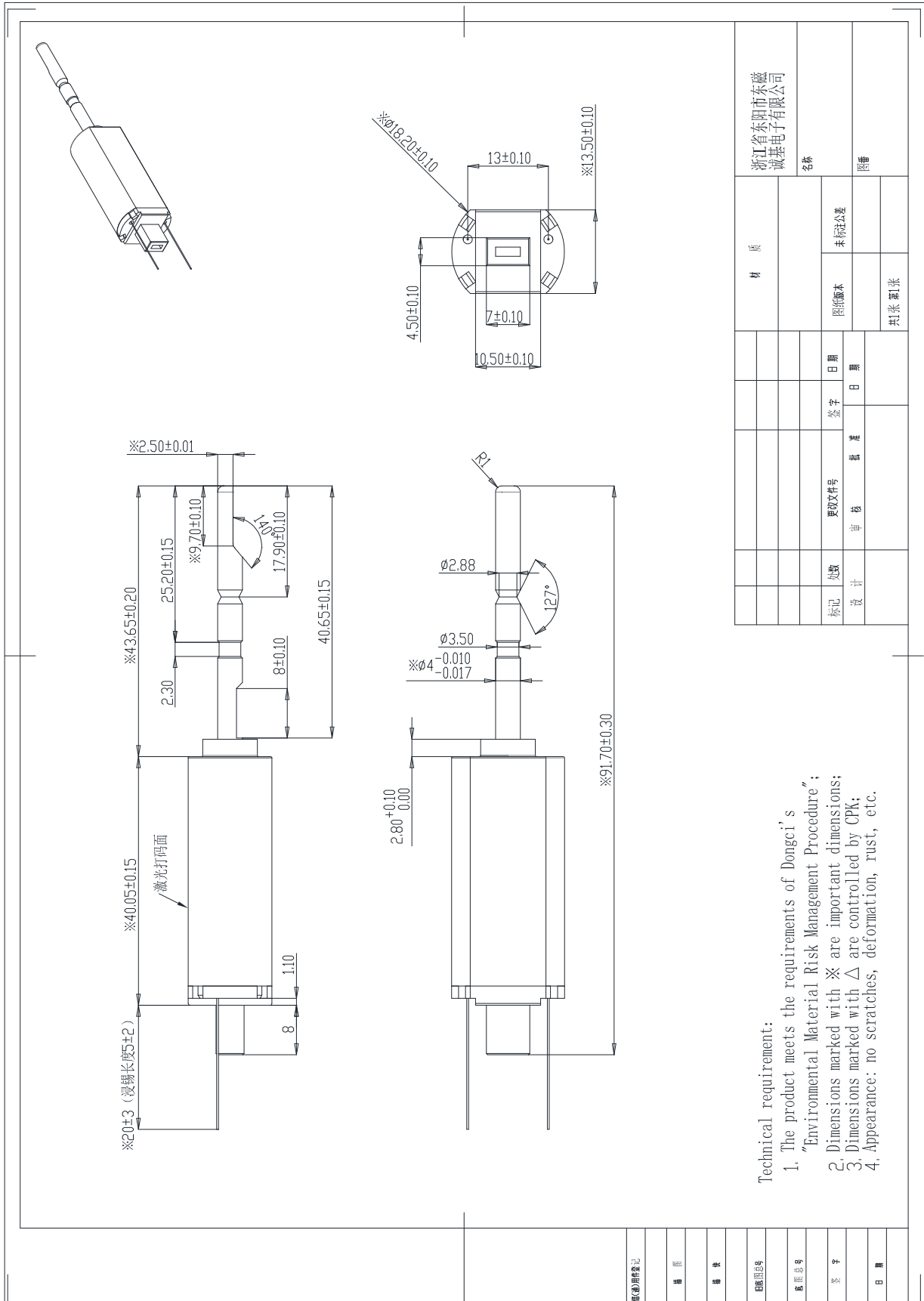


### 1、电气性能 Electrical Characteristics

序号 NO.	项目 Item	规格 Specification	条件-备注 Condition-Remark
1-1	额定电压 Rated voltage	3.7V AC	
1-2	方波电压占空比 Voltage duty cycle	80%	降低电压占空比可以降低噪音、电流和振感 Reducing the voltage duty cycle reduces noise and current as well as vibration
1-3	额定频率 Rated frequency	280Hz	
1-4	额定负载电流 Rated Load current	260mAMax	额定电压、额定负荷、额定频率、80%占空比 At rated voltage and rated load and rated frequency and 80% duty cycle
1-5	空载电流 no load current	220~350mA	额定电压、无负荷、频率 280±10Hz、80%占空比 At rated voltage and no load and frequency 280±10Hz and 80% duty cycle
1-6	端电阻 Terminal resistance	3.4Ω±15%	端子间电阻 Resistance between terminals
1-7	起动电压 Starting voltage	3V AC Max	额定频率与负载下能起动的最低电压 Minimum Voltage for starting
1-8	电感 Temperatur rise	2.7±0.3mH	在直流电压 2V、频率 300Hz 下 At 100V DC and frequency 300Hz
1-9	绝缘电阻 Insulationresistance	10MΩMin	直流电压 100V，测电机端子与机壳间绝缘阻抗 At 100V DC between motor terminal and case
1-10	机械噪音 Mechanical Noise	46dB(A)Max	280Hz、80%占空比、空载 No load and 280Hz and 80% duty cycle
		56dB(A)Max	280Hz、80%占空比、带牙刷 Rated load and 280Hz and 80% duty cycle



### 2、产品外形图 Product Drawing



浙江省东阳市东磁 诚基电子有限公司		名称	
图例版本	图例版本	日期	日期
设计	审核	签字	日期
共张	页张	共张 页张	

Technical requirement:

1. The product meets the requirements of Dongci's "Environmental Material Risk Management Procedure";
2. Dimensions marked with  $\approx$  are important dimensions;
3. Dimensions marked with  $\Delta$  are controlled by CPK;
4. Appearance: no scratches, deformation, rust, etc.

设计	日期
审核	日期
批准	日期
图例版本	图例版本
图例版本	图例版本
图例版本	图例版本
图例版本	图例版本