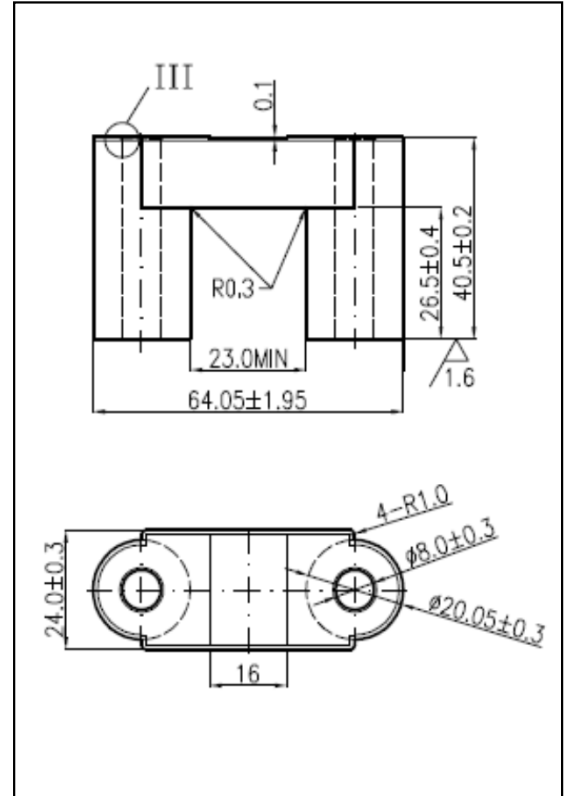


#### CORE SETS

##### Effective core parameters

SYMBOL	PARAMETER	VALUE	UNIT
$\Sigma (1/A)$	core factor ( $C_1$ )	0.74	$\text{mm}^{-1}$
$V_e$	effective volume	56991.19	$\text{mm}^3$
$l_e$	effective length	205.96	mm
$A_e$	effective area	276.71	$\text{mm}^2$
$A_{\min}$	minimum area	265.00	$\text{mm}^2$
$W_t$	mass of core set	$\approx 287.0$	g



#### Characteristic

GRADE	AL (nH/N <sup>2</sup> )	B (mT)	CORE LOSS (W)
	f=10kHz U=0.25V	H=250A/m f=25kHz T=100°C	f=100kHz B=200mT T=100°C
DMR40	3300 ± 25%	≥ 320	≤ 37.31
DMR44	3300 ± 25%	≥ 320	≤ 31.60
DMR95	4500 ± 25%	≥ 320	≤ 31.60