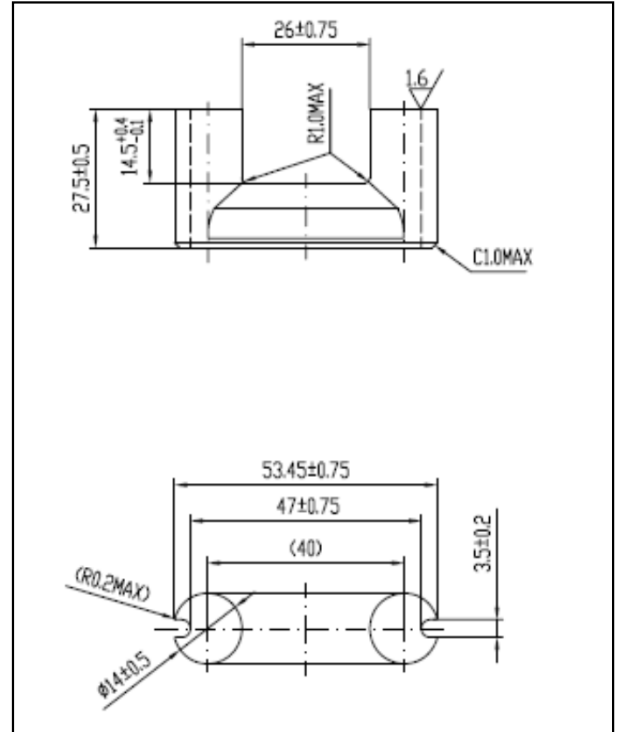


#### CORE SETS

##### Effective core parameters

SYMBOL	PARAMETER	VALUE	UNIT
$\Sigma (1/A)$	core factor ( $C_1$ )	1.02	$\text{mm}^{-1}$
$V_e$	effective volume	22798.75	$\text{mm}^3$
$l_e$	effective length	152.50	mm
$A_e$	effective area	149.50	$\text{mm}^2$
$W_t$	mass of core set	$\approx 120.0$	g



#### Characteristic

GRADE	AL (nH/N <sup>2</sup> )	B (mT)	CORE LOSS (W)
	f=10kHz U=0.25V	H=250A/m f=25kHz T=100°C	f=100kHz B=200mT T=100°C
DMR40	$2500 \pm 25\%$	$\geq 320$	$\leq 15.5$
DMR44	$2500 \pm 25\%$	$\geq 320$	$\leq 12.6$