

Z cores

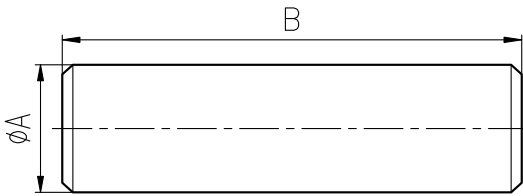


Fig.1

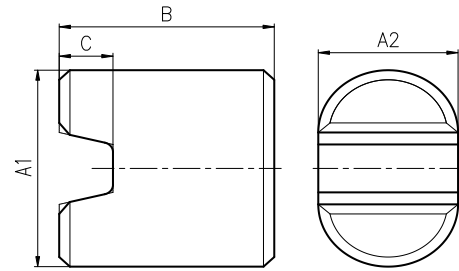


Fig.2

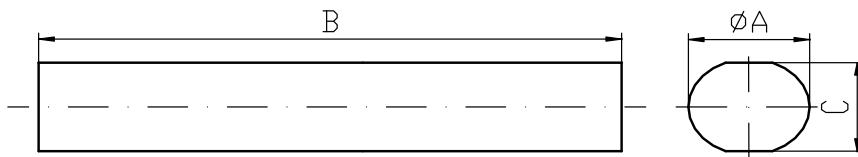


Fig.3

DESCRIPTION	SHAPE	A	B	MASS(g)
Z3×13.9	1	3.0±0.2	13.9±0.4	0.47
Z4.0×30	1	4.0±0.15	30.0±0.5	1.8
Z5×20	1	5±0.2	20±0.5	2.01
Z6×25	1	6±0.2	25±0.5	3.6
Z8×25	1	8±0.2	25±0.5	6.1
Z8×67	3	8 _{-0.5}	67 ^{+1.0}	14.8
Z10×28	1	28.0±0.5	10.0 ⁰ _{-0.5}	10.0
Z12X50	—	12.0±0.3	50.0±0.5	27.1
Z14.8×3.6	1	14.8±0.15	3.6±0.1	3.0
Z17×53	1	17.0±0.35	53.0±0.5	58.0
Z22×60A	1	22.0±0.4	60.0±0.7	109.0
Z38×3	1	38.0±0.6	3.0±0.2	17.0
Z40×10A	1	40.0±0.7	10±0.1	60.0

DESCRIPTION	SHAPE	A1	A2	B	C	MASS(g)
Z2.6X4.1	2	4.1 ⁰ _{-0.3}	2.6 ⁰ _{-0.25}	4.0±0.2	1.0±0.1	0.15