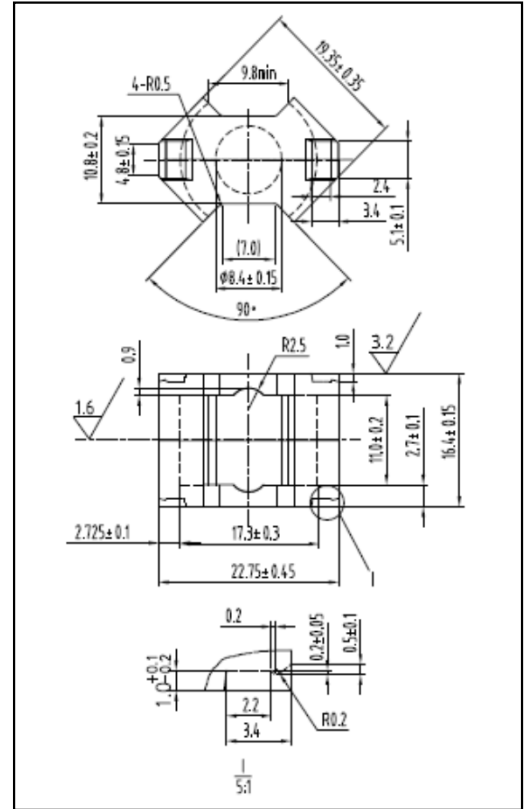


#### CORE SETS

##### Effective core parameters

SYMBOL	PARAMETER	VALUE	UNIT
$\Sigma (1/A)$	core factor ( $C_1$ )	0.59	$\text{mm}^{-1}$
$V_e$	effective volume	2432.00	$\text{mm}^3$
$l_e$	effective length	38.00	mm
$A_e$	effective area	64.00	$\text{mm}^2$
$A_{\min}$	minimum area	55.40	$\text{mm}^2$
$W_t$	mass of core set	$\approx 12.4$	g



#### Characteristic

GRADE	AL (nH/N <sup>2</sup> )	$\mu_i$
	f=10kHz U=0.25V	f=10kHz U=0.25V
R5K	$6900 \pm 25\%$	$\approx 5000$
R7K	$9750 \pm 25\%$	$\approx 7000$
R10K	$\geq 9700$ mirror	$\approx 10000$