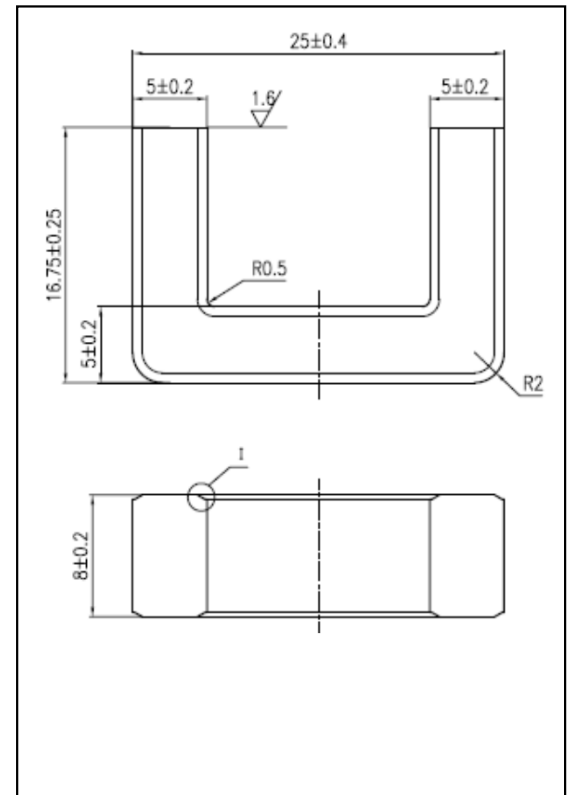


CORE SETS

Effective core parameters

SYMBOL	PARAMETER	VALUE	UNIT
$\Sigma (1/A)$	core factor (C_1)	2.32	mm^{-1}
V_e	effective volume	3708.00	mm^3
l_e	effective length	92.70	mm
A_e	effective area	40.00	mm^2
A_{\min}	minimum area	39.85	mm^2
W_t	mass of core set	≈ 18.6	g



Characteristic

GRADE	AL (nH/N^2)	μ_i
	f=10kHz U=0.25V	f=10kHz U=0.25V
R5K	$1250 \pm 26\%$	≈ 5000
R7K	$1550 \pm 27\%$	≈ 7000
R10K	≥ 1600 (mirror)	≈ 10000
R12K	≥ 2200 (mirror)	≈ 12000