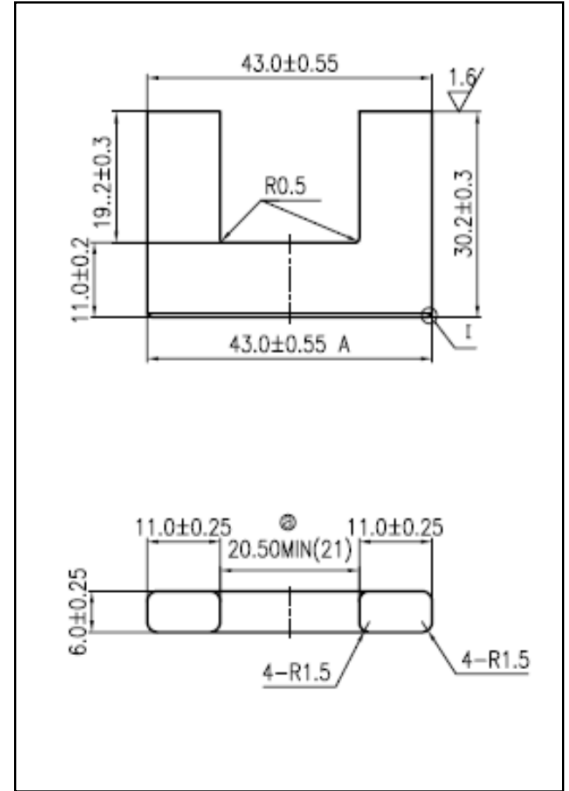


CORE SETS

Effective core parameters

SYMBOL	PARAMETER	VALUE	UNIT
$\Sigma (1/A)$	core factor (C_1)	2.32	mm^{-1}
Ve	effective volume	10098.00	mm^3
le	effective length	153.00	mm
Ae	effective area	66.00	mm^2
Amin	minimum area	64.07	mm^2
Wt	mass of core set	≈ 52.0	g



Characteristic

GRADE	AL (nH/N^2)	B (mT)	CORE LOSS (W)
	f=10kHz U=0.25V	H=250A/m f=25kHz T=100°C	f=100kHz B=200mT T=100°C
DMR40	$1100 \pm 25\%$	≥ 315	≤ 6.24
DMR44	$1100 \pm 25\%$	≥ 315	≤ 5.46