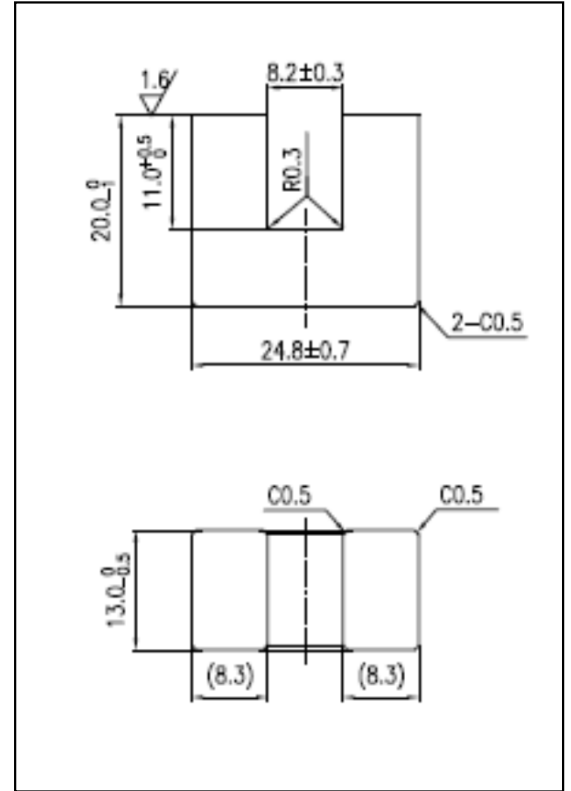


CORE SETS

Effective core parameters

SYMBOL	PARAMETER	VALUE	UNIT
$\Sigma (1/A)$	core factor ( $C_1$ )	0.82	$\text{mm}^{-1}$
$V_e$	effective volume	9264.4	$\text{mm}^3$
$l_e$	effective length	87.4	mm
$A_e$	effective area	106.0	$\text{mm}^2$
$A_{\text{min}}$	minimum area	104.6	$\text{mm}^2$
$W_t$	mass of core set	$\approx 46.2$	g



Characteristic

GRADE	AL (nH/N <sup>2</sup> )	$\mu_i$
	f=10kHz U=0.25V	f=10kHz U=0.25V
R5K	4720 ± 25%	$\approx 5000$
R7K	5900 ± 25%	$\approx 7000$