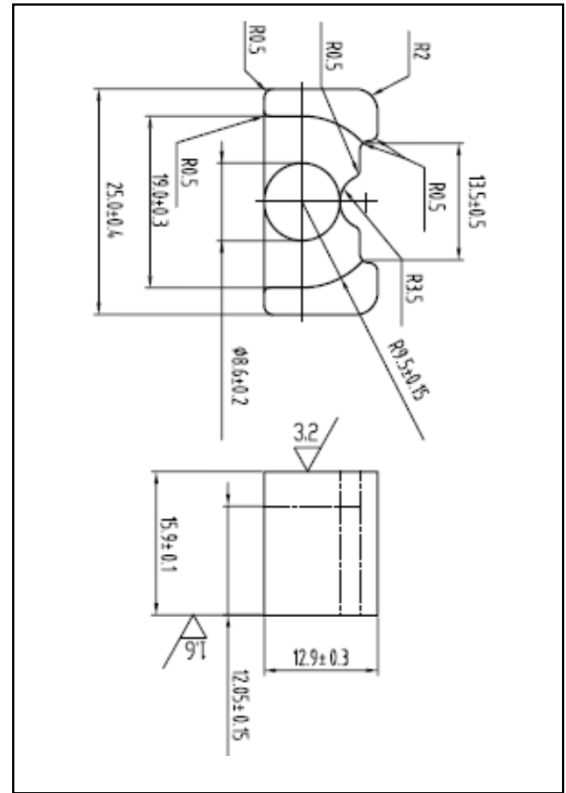


#### CORE SETS

##### Effective core parameters

SYMBOL	PARAMETER	VALUE	UNIT
$\Sigma (1/A)$	core factor ( $C_1$ )	0.91	$\text{mm}^{-1}$
$V_e$	effective volume	4499.20	$\text{mm}^3$
$l_e$	effective length	64.00	mm
$A_e$	effective area	70.30	$\text{mm}^2$
$A_{\min}$	minimum area	58.08	$\text{mm}^2$
$W_t$	mass of core set	$\approx 30.0$	g



#### Characteristic

GRADE	AL (nH/N <sup>2</sup> )	B (mT)	CORE LOSS (W)
	f=10kHz U=0.25V	H=250A/m f=25kHz T=100°C	f=100kHz B=200mT T=100°C
DMR40	2600±25%	≥315	≤3.60
DMR44	2600±25%	≥315	≤3.15
DMR47	2700±25%	≥325	≤2.85
DMR95	3600±25%	≥315	≤3.15