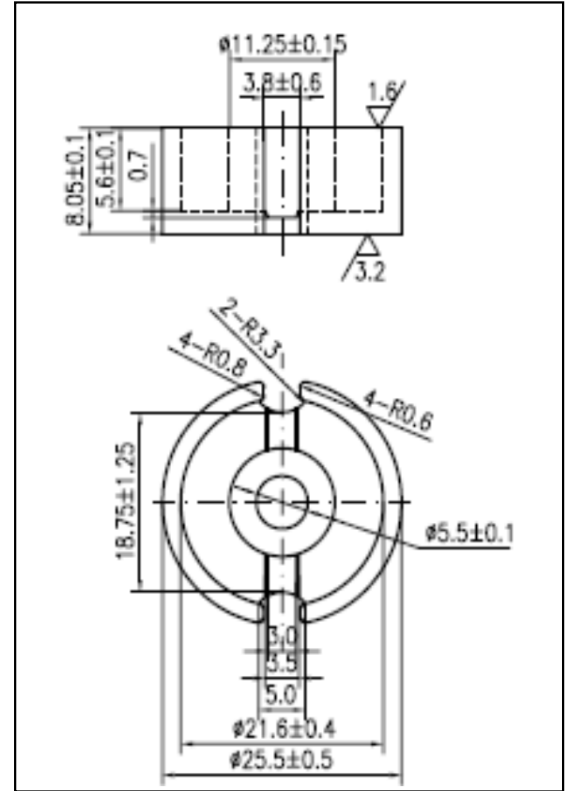


CORE SETS

Effective core parameters

SYMBOL	PARAMETER	VALUE	UNIT
$\Sigma (1/A)$	core factor (C_1)	0.42	mm^{-1}
V_e	effective volume	3530.45	mm^3
l_e	effective length	38.50	mm
A_e	effective area	91.70	mm^2
A_{\min}	minimum area	75.65	mm^2
W_t	mass of core set	≈ 22.0	g



Characteristic

GRADE	AL (nH/N ²)	B (mT)	CORE LOSS (W)
	f=10kHz U=0.25V	H=250A/m f=25kHz T=100°C	f=100kHz B=200mT T=100°C
DMR40	4800 ± 25%	≥ 315	≤ 2.86
DMR44	4800 ± 25%	≥ 315	≤ 2.31
DMR95	6000 ± 25%	≥ 315	≤ 2.05