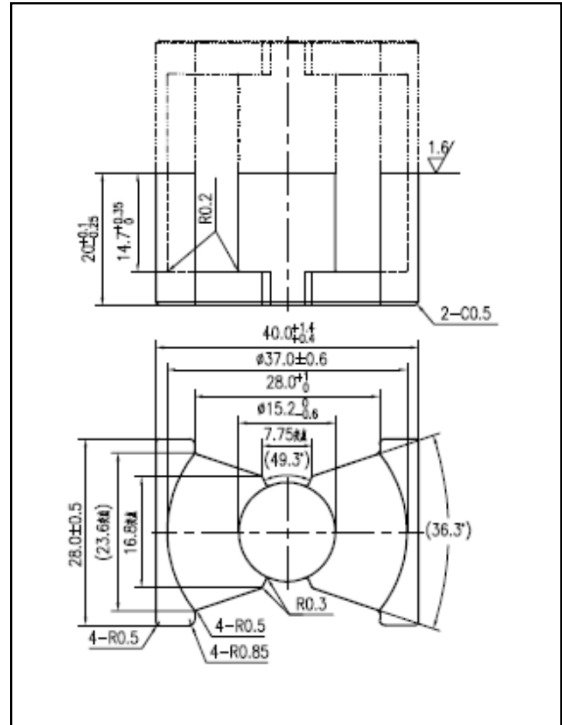


CORE SETS

Effective core parameters

SYMBOL	PARAMETER	VALUE	UNIT
$\Sigma (1/A)$	core factor (C_1)	0.51	mm^{-1}
Ve	effective volume	20481.9	mm^3
le	effective length	101.9	mm
Ae	effective area	201.0	mm^2
Amin	minimum area	174.4	mm^2
Wt	mass of core set	≈ 96.0	g



Characteristic

GRADE	AL (nH/N ²)	B (mT)	CORE LOSS (W)
	f=10kHz U=0.25V	H=250A/m f=25kHz T=100°C	f=100kHz B=200mT T=100°C
DMR40	5000 ± 25%	≥ 315	≤ 14.0
DMR44	5000 ± 25%	≥ 315	≤ 12.0
DMR95	6000 ± 25%	≥ 315	≤ 10.83