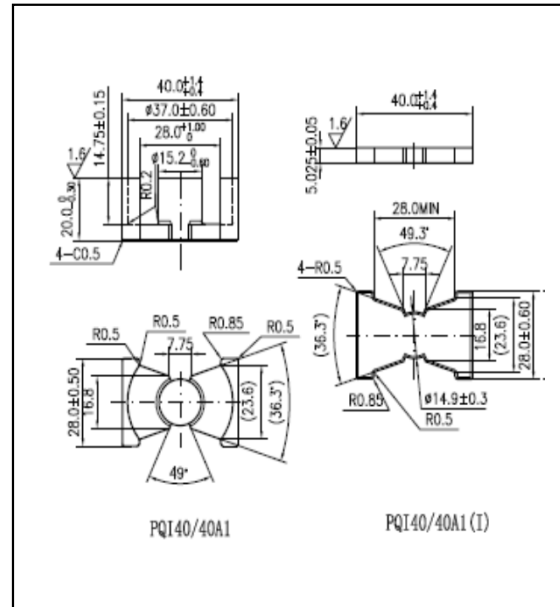


CORE SETS

Effective core parameters

SYMBOL	PARAMETER	VALUE	UNIT
$\Sigma (1/A)$	core factor (C_1)	0.33	mm^{-1}
V_e	effective volume	12642.27	mm^3
l_e	effective length	64.37	mm
A_e	effective area	196.40	mm^2
A_{\min}	minimum area	181.46	mm^2
W_t	mass of core set	≈ 70.0	g



Characteristic

GRADE	AL (nH/N ²)	B (mT)	CORE LOSS (W)
	f=10kHz U=0.25V	H=250A/m f=25kHz T=100°C	f=100kHz B=200mT T=100°C
DMR40	6000 ± 25%	≥ 315	≤ 8.40
DMR44	6000 ± 25%	≥ 315	≤ 7.70
DMR95	6500 ± 25%	≥ 315	≤ 7.32