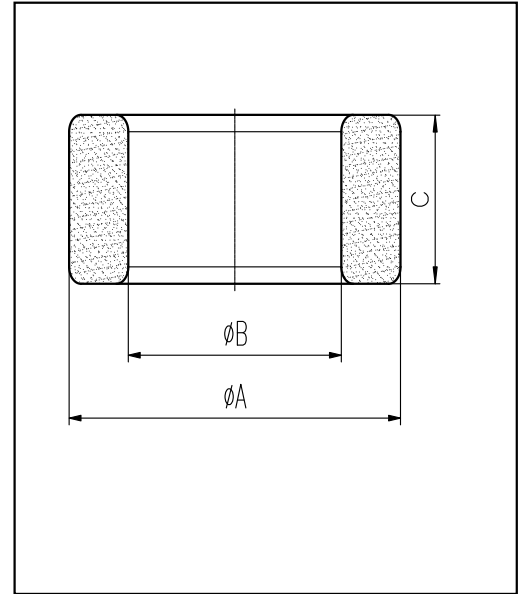


H cores

CORE SETS

Effective core parameters

SYMBOL	PARAMETER	VALUE	UNIT
$\Sigma (1/A)$	core factor (C_1)	2.30	mm^{-1}
V_e	effective volume	293.80	mm^3
l_e	effective length	26.00	mm
A_e	effective area	11.30	mm^2
W_t	mass of core	≈ 1.8	g



尺寸	A	B	C
Coat			
Uncoat	$12.0^{+0.2}_{-0.4}$	6.0 ± 0.3	4.0 ± 0.3
Coated	12.8max	5.3min	4.7max

Note: With grass green epoxy coating

Characteristic

GRADE	AL (nH/N^2)	B (mT)	CORE LOSS (W)
		$f=10\text{kHz}$ $U=0.25\text{V}$	$H=250\text{A/m}$ $f=25\text{kHz}$ $T=100^\circ\text{C}$
DMR40	$1200 \pm 25\%$	≥ 315	≤ 0.26
DMR44	$1200 \pm 25\%$	≥ 315	≤ 0.20
DMR95	$1800 \pm 25\%$	≥ 315	≤ 0.20