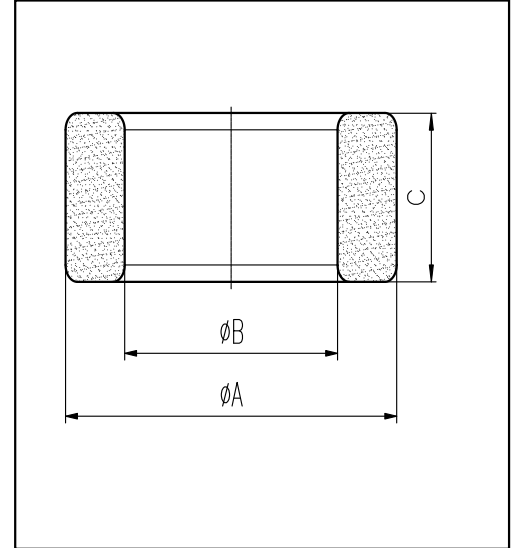


H cores

CORE SETS

Effective core parameters

SYMBOL	PARAMETER	VALUE	UNIT
$\Sigma (1/A)$	core factor (C_1)	2.73	mm^{-1}
V_e	effective volume	690.06	mm^3
l_e	effective length	43.40	mm
A_e	effective area	15.90	mm^2
W_t	mass of core	≈ 3.5	g



尺寸	A	B	C
Coat			
Uncoat	16.0 ± 0.4	12.0 ± 0.3	8.0 ± 0.3
Coated	16.8max	11.3min	8.7max

Note: With grass green epoxy coating

Characteristic

GRADE	AL (nH/N^2)	B (mT)	CORE LOSS (W)
		f=10kHz U=0.25V	H=250A/m f=25kHz T=100°C
DMR40	$1050 \pm 25\%$	≥ 315	≤ 0.10