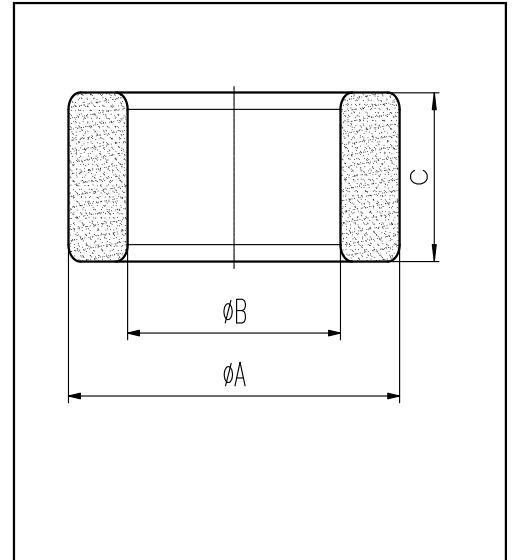


H cores

CORE SETS

Effective core parameters

SYMBOL	PARAMETER	VALUE	UNIT
$\Sigma (1/A)$	core factor (C_1)	0.96	mm^{-1}
V_e	effective volume	1801.28	mm^3
l_e	effective length	41.60	mm
A_e	effective area	43.30	mm^2
W_t	mass of core	≈ 9.6	g



尺寸	A	B	C
Coat			
Uncoat	18.5 ± 0.3	$9.7^{+0.3}_{-0.2}$	10.3 ± 0.2
Coated	19.3max	9.0min	11.0max

Note: With grass green epoxy coating

Characteristice

GRADE	AL (nH/N ²)	B (mT)	CORE LOSS (W)
	f=10kHz U=0.25V	H=250A/m f=25kHz T=100°C	f=100kHz B=200mT T=100°C
DMR40	$3055 \pm 25\%$	≥ 315	≤ 1.25
DMR44	$3055 \pm 25\%$	≥ 315	≤ 1.01