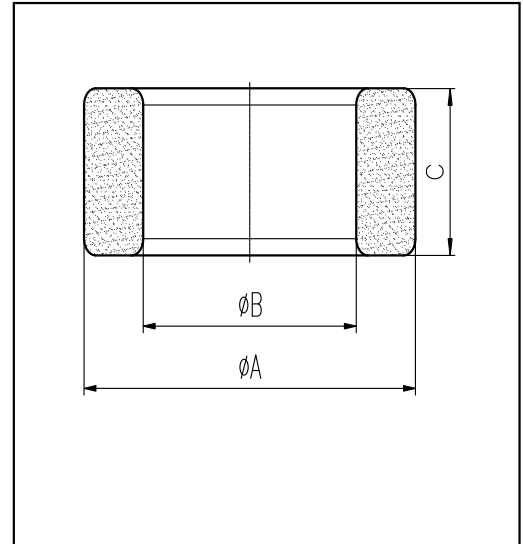


CORE SETS

Effective core parameters

SYMBOL	PARAMETER	VALUE	UNIT
$\Sigma (1/A)$	core factor (C_1)	1.53	mm^{-1}
V_e	effective volume	1128.80	mm^3
l_e	effective length	41.50	mm
A_e	effective area	27.20	mm^2
W_t	mass of core	≈ 6.0	g



尺寸	A	B	C
Coat			
Uncoat	18.0 ± 0.4	10.0 ± 0.3	7.0 ± 0.4
Coated	18.9_{max}	9.2_{min}	7.9_{max}

Note: With grass green epoxy coating

Characteristic

GRADE	AL (nH/N^2)	B (mT)	CORE LOSS (W)
		$f=10\text{kHz}$ $U=0.25\text{V}$	$H=250\text{A/m}$ $f=25\text{kHz}$ $T=100^\circ\text{C}$
DMR40	$1850 \pm 25\%$	≥ 315	≤ 0.73