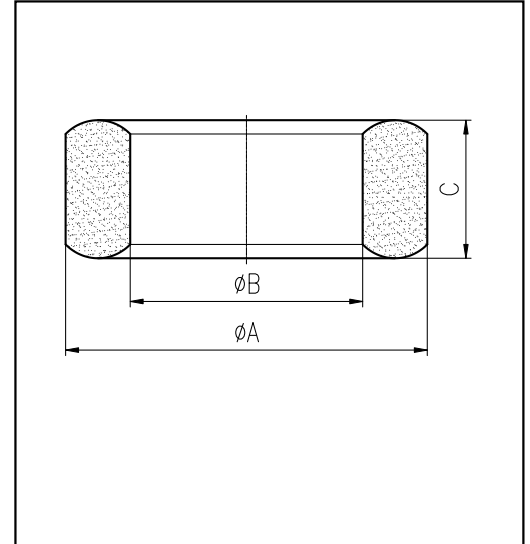


H cores

CORE SETS

Effective core parameters

SYMBOL	PARAMETER	VALUE	UNIT
$\Sigma (1/A)$	core factor (C_1)	2.57	mm^{-1}
V_e	effective volume	815.24	mm^3
l_e	effective length	45.80	mm
A_e	effective area	17.80	mm^2
W_t	mass of core	≈ 4.15	g



尺寸	A	B	C
Coat			
Uncoat	18.0 ± 0.4	12.0 ± 0.3	6.0 ± 0.3
Coated	18.8max	11.3min	6.7max

Note: With grass green epoxy coating

Characteristic

GRADE	AL (nH/N^2)	B (mT)	CORE LOSS (W)
	$f=10\text{kHz}$ $U=0.25\text{V}$	$H=250\text{A/m}$ $f=25\text{kHz}$ $T=100^\circ\text{C}$	$f=100\text{kHz}$ $B=200\text{mT}$ $T=100^\circ\text{C}$
DMR40	$1118 \pm 25\%$	≥ 315	≤ 0.54
DMR44	$1118 \pm 25\%$	≥ 315	≤ 0.44