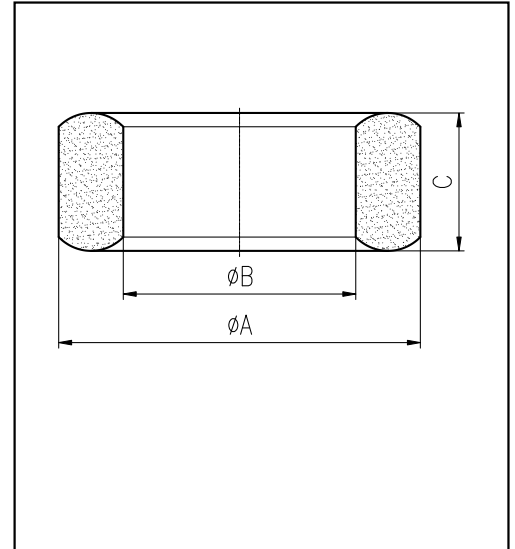


H cores

CORE SETS

Effective core parameters

SYMBOL	PARAMETER	VALUE	UNIT
$\Sigma (1/A)$	core factor ( $C_1$ )	1.31	$\text{mm}^{-1}$
$V_e$	effective volume	1770.08	$\text{mm}^3$
$l_e$	effective length	48.10	mm
$A_e$	effective area	36.80	$\text{mm}^2$
$W_t$	mass of core	$\approx 10$	g



尺寸 Coat	A	B	C
Uncoat	$20.0 \pm 0.5$	$12.0 \pm 0.3$	$10.0 \pm 0.4$
Coated	20.8max	11.3min	10.8max

Note: With grass green epoxy coating

Characteristic

GRADE	AL (nH/N <sup>2</sup> )	B (mT)	CORE LOSS (W)
	$f=10\text{kHz}$ $U=0.25\text{V}$	$H=250\text{A/m}$ $f=25\text{kHz}$ $T=100^\circ\text{C}$	$f=100\text{kHz}$ $B=200\text{mT}$ $T=100^\circ\text{C}$
DMR40	$2347 \pm 25\%$	$\geq 320$	$\leq 1.30$
DMR44	$2347 \pm 25\%$	$\geq 320$	$\leq 1.05$