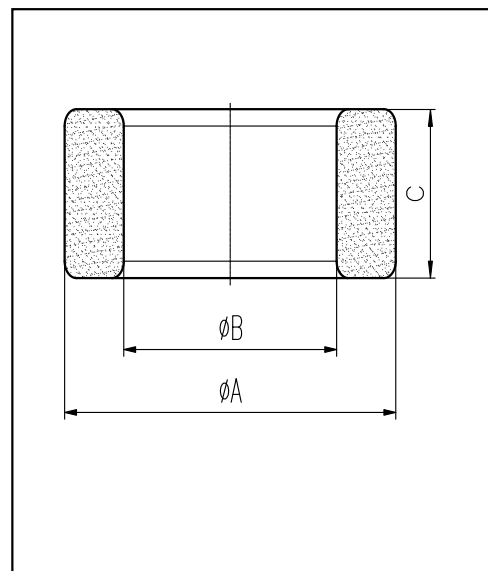


H cores

CORE SETS

Effective core parameters

SYMBOL	PARAMETER	VALUE	UNIT
$\Sigma (1/A)$	core factor (C_1)	1.39	mm^{-1}
V_e	effective volume	2145.78	mm^3
l_e	effective length	54.60	mm
A_e	effective area	39.30	mm^2
W_t	mass of core	≈ 11.0	g



尺寸	A	B	C
Coat			
Uncoat	22.0 ± 0.4	14.0 ± 0.4	10.0 ± 0.3
Coated	22.8max	13.3min	10.7max

Note: With grass green epoxy coating

Characteristic

GRADE	AL (nH/N^2)	B (mT)	CORE LOSS (W)
	$f=10\text{kHz}$ $U=0.25\text{V}$	$H=250\text{A/m}$ $f=25\text{kHz}$ $T=100^\circ\text{C}$	$f=100\text{kHz}$ $B=200\text{mT}$ $T=100^\circ\text{C}$
DMR40	$2077 \pm 25\%$	≥ 320	≤ 1.32
DMR44	$2077 \pm 25\%$	≥ 320	≤ 1.16