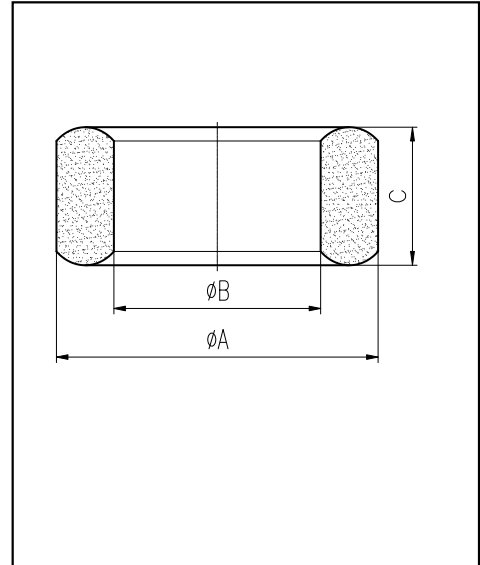


### H cores

#### CORE SETS

##### Effective core parameters

SYMBOL	PARAMETER	VALUE	UNIT
$\Sigma (1/A)$	core factor ( $C_1$ )	1.31	$\text{mm}^{-1}$
$V_e$	effective volume	2758.59	$\text{mm}^3$
$l_e$	effective length	60.10	mm
$A_e$	effective area	45.90	$\text{mm}^2$
$W_t$	mass of core	$\approx 15.1$	g



尺寸	A	B	C
Coat			
Uncoat	$25.0 \pm 0.4$	$15.0 \pm 0.4$	$10.0 \pm 0.3$
Coated	25.8max	14.3min	10.7max

Note: With grass green epoxy coating

#### Characteristic

GRADE	AL ( $\text{nH}/\text{N}^2$ )	B (mT)	CORE LOSS (W)
	f=10kHz U=0.25V	H=250A/m f=25kHz T=100°C	f=100kHz B=200mT T=100°C
DMR40	$2200 \pm 25\%$	$\geq 320$	$\leq 1.80$
DMR44	$2200 \pm 25\%$	$\geq 340$	$\leq 1.51$
DMR95	$2800 \pm 25\%$	$\geq 340$	$\leq 1.51$