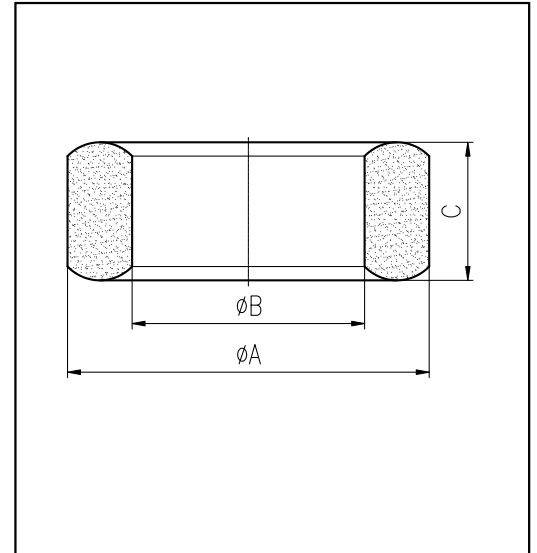


### H cores

#### CORE SETS

##### Effective core parameters

SYMBOL	PARAMETER	VALUE	UNIT
$\Sigma (1/A)$	core factor ( $C_1$ )	0.98	$\text{mm}^{-1}$
$V_e$	effective volume	3690.14	$\text{mm}^3$
$l_e$	effective length	60.10	mm
$A_e$	effective area	61.40	$\text{mm}^2$
$W_t$	mass of core	$\approx 20$	g



尺寸 Coat	A	B	C
Uncoat	$25 \pm 0.4$	$15.0 \pm 0.4$	$13.0 \pm 0.3$
Coated	25.8max	14.3min	13.8max

Note: With grass green epoxy coating

#### Characteristic

GRADE	AL ( $\text{nH/N}^2$ )	B (mT)	CORE LOSS (W)
	$f=10\text{kHz}$ $U=0.25\text{V}$	$H=250\text{A/m}$ $f=25\text{kHz}$ $T=100^\circ\text{C}$	$f=100\text{kHz}$ $B=200\text{mT}$ $T=100^\circ\text{C}$
DMR40	$3051 \pm 25\%$	$\geq 320$	$\leq 2.40$
DMR44	$3051 \pm 25\%$	$\geq 320$	$\leq 2.10$