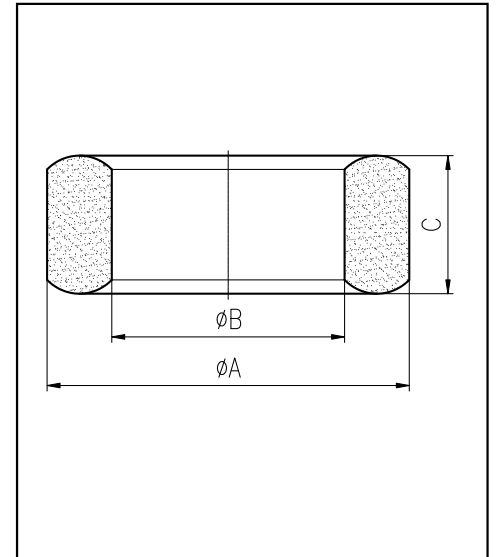


H cores

CORE SETS

Effective core parameters

SYMBOL	PARAMETER	VALUE	UNIT
$\Sigma (1/A)$	core factor (C_1)	0.59	mm^{-1}
V_e	effective volume	6303.6	mm^3
l_e	effective length	61.2	mm
A_e	effective area	103.0	mm^2
W_t	mass of core	≈ 34.7	g



尺寸	A	B	C
Coat			
Uncoat	26 ± 0.5	15.0 ± 0.5	20.0 ± 0.7
Coated	26.8max	14.3min	20.8max

Note: With grass green epoxy coating

Characteristic

GRADE	AL (nH/N ²)	B (mT)	CORE LOSS (W)
	$f=10\text{kHz}$ $U=0.25\text{V}$	$H=250\text{A/m}$ $f=25\text{kHz}$ $T=100^\circ\text{C}$	$f=100\text{kHz}$ $B=200\text{mT}$ $T=100^\circ\text{C}$
DMR40	$5055 \pm 25\%$	≥ 320	≤ 4.51
DMR44	$5055 \pm 25\%$	≥ 320	≤ 3.64