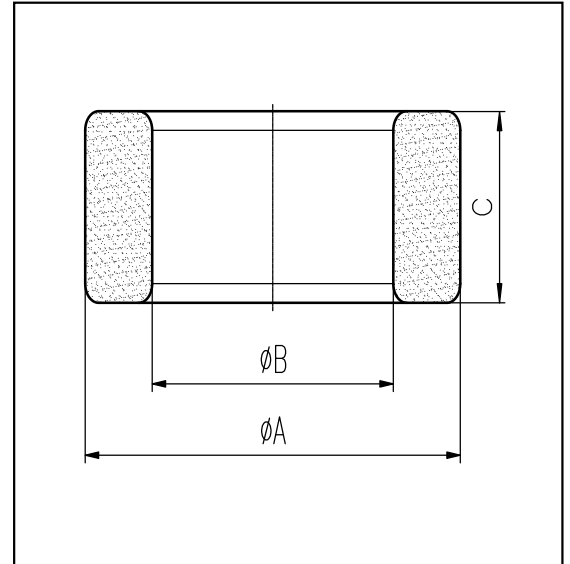


H cores

CORE SETS

Effective core parameters

SYMBOL	PARAMETER	VALUE	UNIT
$\Sigma (1/A)$	core factor (C_1)	1.19	mm^{-1}
V_e	effective volume	4205.52	mm^3
l_e	effective length	70.80	mm
A_e	effective area	59.40	mm^2
W_t	mass of core	≈ 21.2	g



尺寸 Coat	A	B	C
Uncoat	27 ± 0.5	19 ± 0.5	15 ± 0.5
Coated	27.8max	18.3min	15.8max

Note: With grass green epoxy coating

Characteristic

GRADE	AL (nH/N ²)	B (mT)	CORE LOSS (W)
	f=10kHz U=0.25V	H=250A/m f=25kHz T=100°C	f=100kHz B=200mT T=100°C
DMR40	$2422 \pm 25\%$	≥ 320	≤ 2.55