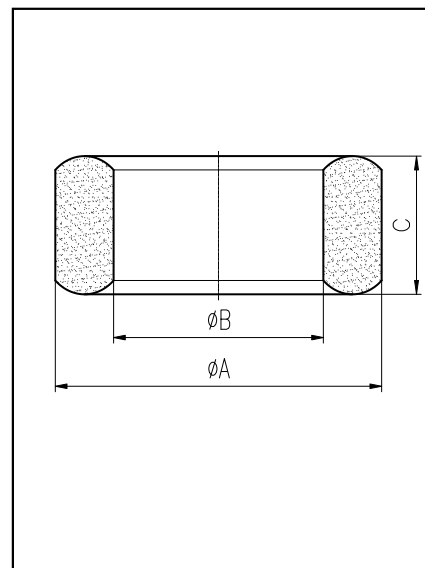


H cores

CORE SETS

Effective core parameters

SYMBOL	PARAMETER	VALUE	UNIT
$\Sigma (1/A)$	core factor (C_1)	0.92	mm^{-1}
V_e	effective volume	4696.96	mm^3
l_e	effective length	65.60	mm
A_e	effective area	71.60	mm^2
W_t	mass of core	≈ 25.9	g



尺寸 Coat	A	B	C
Uncoat	28.0 ± 0.4	16.0 ± 0.3	13.0 ± 0.3
Coated	28.8max	15.3min	13.8max

Note: With grass green epoxy coating

Characteristic

GRADE	AL (nH/N^2)	B (mT)	CORE LOSS (W)
	$f=10\text{kHz}$ $U=0.25\text{V}$	$H=250\text{A/m}$ $f=25\text{kHz}$ $T=100^\circ\text{C}$	$f=100\text{kHz}$ $B=200\text{mT}$ $T=100^\circ\text{C}$
DMR40	$3610 \pm 25\%$	≥ 320	≤ 3.11
DMR95	$4600 \pm 25\%$	≥ 340	≤ 2.35