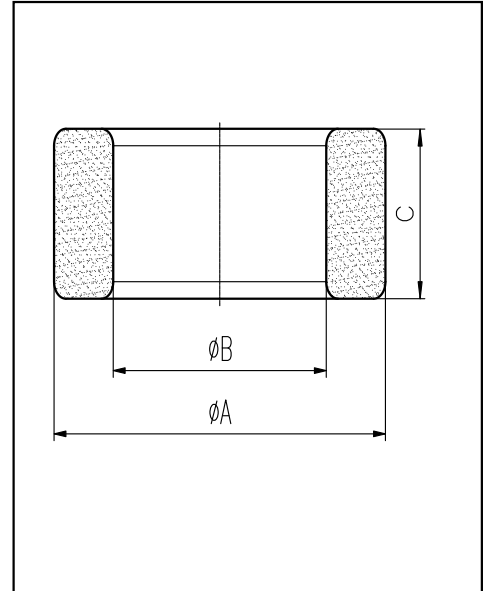


H cores

CORE SETS

Effective core parameters

SYMBOL	PARAMETER	VALUE	UNIT
$\Sigma (1/A)$	core factor (C_1)	7.69	mm^{-1}
V_e	effective volume	6.80	mm^3
l_e	effective length	7.23	mm
A_e	effective area	0.94	mm^2
W_t	mass of core	≈ 0.04	g



尺寸	A	B	C
Coat			
Uncoat	3.05 ± 0.13	1.78 ± 0.13	$1.52^{+0.13}_{-0.12}$
Coated	3.05 ± 0.13	1.78 ± 0.13	$1.52^{+0.13}_{-0.12}$

Note: With parylene coating

Characteristic

GRADE	AL (nH/N ²)	B (mT)	CORE LOSS (W)
		f=10kHz U=0.25V	H=250A/m f=25kHz T=100°C
DMR40	$370 \pm 25\%$	—	—