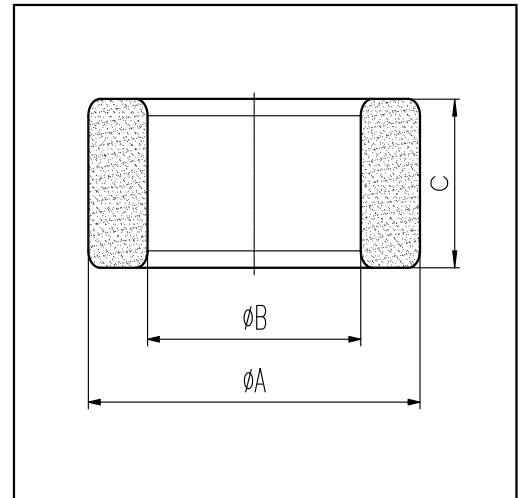


H cores

CORE SETS

Effective core parameters

SYMBOL	PARAMETER	VALUE	UNIT
$\Sigma (1/A)$	core factor (C_1)	0.93	mm^{-1}
V_e	effective volume	8592.64	mm^3
l_e	effective length	89.60	mm
A_e	effective area	95.90	mm^2
W_t	mass of core	≈ 44.3	g



尺寸	A	B	C
Coat			
Uncoat	36.0 ± 0.8	23.0 ± 0.6	15.0 ± 0.5
Coated	36.9_{max}	22.2_{min}	15.9_{max}

Note: With grass green epoxy coating

Characteristic

GRADE	AL (nH/N^2)	B (mT)	CORE LOSS (W)
	$f=10\text{kHz}$ $U=0.25\text{V}$	$H=250\text{A/m}$ $f=25\text{kHz}$ $T=100^\circ\text{C}$	$f=100\text{kHz}$ $B=200\text{mT}$ $T=100^\circ\text{C}$
DMR40	$2700 \pm 25\%$	≥ 320	≤ 5.30
DMR44	$2700 \pm 25\%$	≥ 320	≤ 4.43
DMR47	$3000 \pm 25\%$	≥ 340	≤ 4.00
DMR95	$4000 \pm 25\%$	≥ 340	≤ 4.50