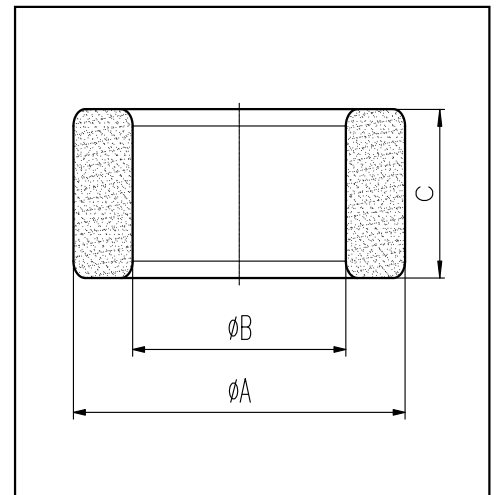


H cores

CORE SETS

Effective core parameters

SYMBOL	PARAMETER	VALUE	UNIT
$\Sigma (1/A)$	core factor (C_1)	0.71	mm^{-1}
V_e	effective volume	9687.6	mm^3
l_e	effective length	82.8	mm
A_e	effective area	117.0	mm^2
W_t	mass of core	≈ 54.0	g



尺寸	A	B	C
Coat			
Uncoat	38.1 ± 0.5	19.0 ± 0.5	12.7 ± 0.5
Coated	39.1max	18.1min	13.7max

Note: With grass green epoxy coating

Characteristic

GRADE	AL (nH/N^2)	B (mT)	CORE LOSS (W)
	$f=10\text{kHz}$ $U=0.25\text{V}$	$H=250\text{A/m}$ $f=25\text{kHz}$ $T=100^\circ\text{C}$	$f=100\text{kHz}$ $B=200\text{mT}$ $T=100^\circ\text{C}$
DMR40	$4100 \pm 25\%$	≥ 320	≤ 6.48