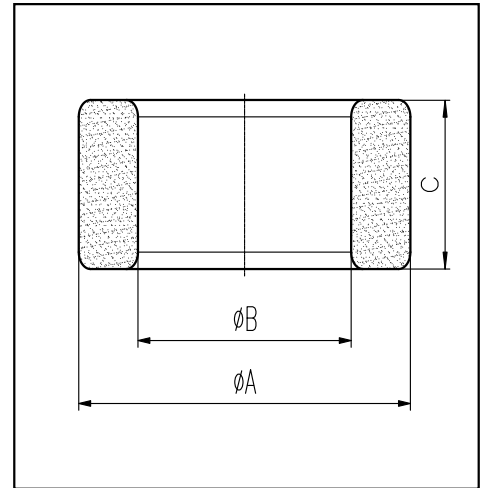


H cores

CORE SETS

Effective core parameters

SYMBOL	PARAMETER	VALUE	UNIT
$\Sigma (1/A)$	core factor (C_1)	0.69	mm^{-1}
V_e	effective volume	9841.30	mm^3
l_e	effective length	82.70	mm
A_e	effective area	119.00	mm^2
W_t	mass of core	≈ 54.2	g



尺寸	A	B	C
Coat			
Uncoat	38.0 ± 0.5	19 ± 0.5	13.0 ± 0.4
Coated	39.0_{max}	18.1_{min}	13.9_{max}

Note: With grass green epoxy coating

Characteristic

GRADE	AL (nH/N^2)	B (mT)	CORE LOSS (W)
		f=10kHz U=0.25V	H=250A/m f=25kHz T=100°C
DMR40	$3800 \pm 25\%$	≥ 320	≤ 3.6