

H cores

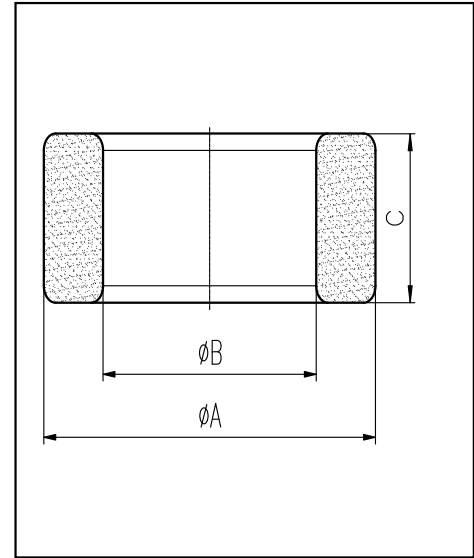
CORE SETS

Effective core parameters

SYMBOL	PARAMETER	VALUE	UNIT
$\Sigma (1/A)$	core factor (C_1)	0.82	mm^{-1}
V_e	effective volume	9777.30	mm^3
l_e	effective length	89.70	mm
A_e	effective area	109.00	mm^2
W_t	mass of core	≈ 52.0	g

尺寸 Coat	A	B	C
	Uncoat	38.0 ± 0.5	22.0 ± 0.5
Coated	38.9max	21.2min	14.8max

Note: With grass green epoxy coating



Characteristic

GRADE	AL (nH/N^2)	B (mT)	CORE LOSS (W)
		f=10kHz U=0.25V	H=250A/m f=25kHz T=100°C
DMR40	$3200 \pm 25\%$	≥ 320	≤ 6.5