

H cores

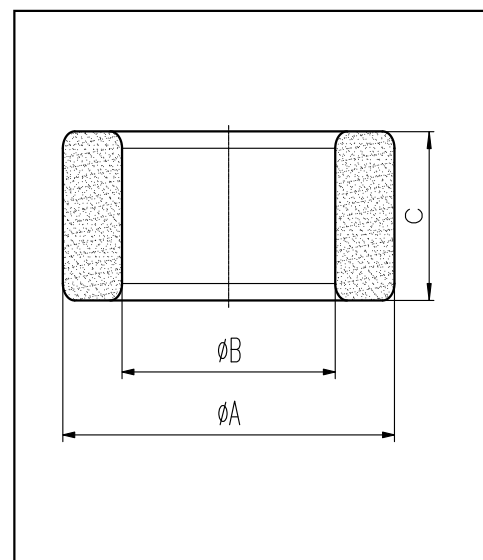
CORE SETS

Effective core parameters

SYMBOL	PARAMETER	VALUE	UNIT
$\Sigma (1/A)$	core factor (C_1)	0.73	mm^{-1}
V_e	effective volume	14523.0	mm^3
l_e	effective length	103.0	mm
A_e	effective area	141.0	mm^2
W_t	mass of core	≈ 73.8	g

尺寸	A	B	C
Coat			
Uncoat	42.0 ± 0.63	26.0 ± 0.39	18.0 ± 0.27
Coated	43.0max	25.1min	19.0max

Note: With grass green epoxy coating



Characteristic

GRADE	AL (nH/N^2)	B (mT)	CORE LOSS (W)
	$f=10\text{kHz}$ $U=0.25\text{V}$	$H=250\text{A/m}$ $f=25\text{kHz}$ $T=100^\circ\text{C}$	$f=100\text{kHz}$ $B=200\text{mT}$ $T=100^\circ\text{C}$
DMR40	$3970 \pm 25\%$	≥ 320	≤ 8.86
DMR95	$4400 \pm 25\%$	≥ 320	≤ 8.00