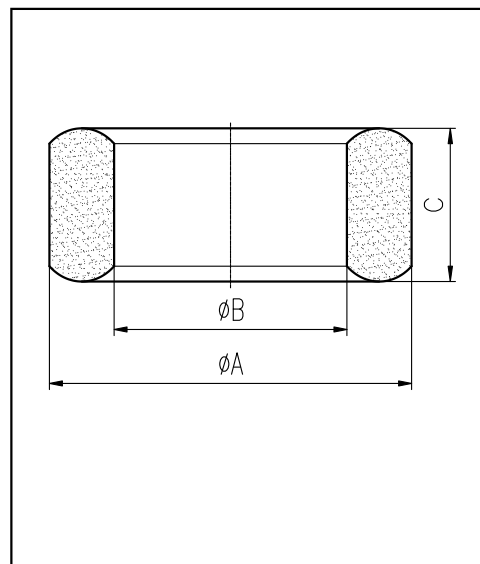


H cores

CORE SETS

Effective core parameters

SYMBOL	PARAMETER	VALUE	UNIT
$\Sigma (1/A)$	core factor (C_1)	1.13	mm^{-1}
V_e	effective volume	11514.00	mm^3
l_e	effective length	114.00	mm
A_e	effective area	101.00	mm^2
W_t	mass of core	≈ 61.1	g



尺寸	A	B	C
Coat			
Uncoat	44.5 ± 0.5	30.0 ± 0.4	15.0 ± 0.35
Coated	45.7max	29.0min	16.0max

Note: With grass green epoxy coating

Characteristic

GRADE	AL (nH/N ²)	B (mT)	CORE LOSS (W)
	$f=10\text{kHz}$ $U=0.25\text{V}$	$H=250\text{A/m}$ $f=25\text{kHz}$ $T=100^\circ\text{C}$	$f=100\text{kHz}$ $B=200\text{mT}$ $T=100^\circ\text{C}$
DMR40	$2700 \pm 25\%$	≥ 315	≤ 7.33
DMR44	$2700 \pm 25\%$	≥ 315	≤ 6.72
DMR95	$3800 \pm 25\%$	≥ 315	≤ 6.42