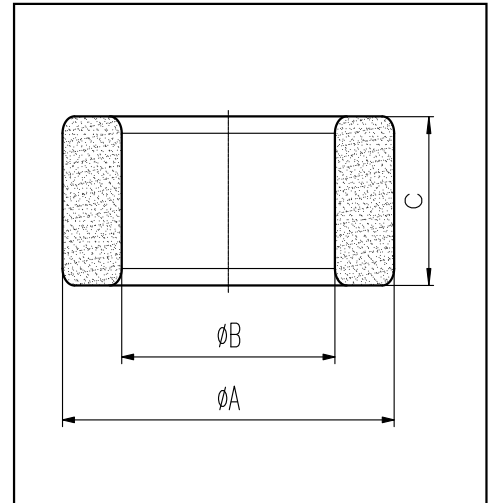


H cores

CORE SETS

Effective core parameters

SYMBOL	PARAMETER	VALUE	UNIT
$\Sigma (1/A)$	core factor (C_1)	1.04	mm^{-1}
V_e	effective volume	11021.00	mm^3
l_e	effective length	107.00	mm
A_e	effective area	103.00	mm^2
W_t	mass of core	≈ 62.3	g



尺寸 Coat	A	B	C
	Uncoat	$45.0^{+0.2}_{-1.4}$	26.0^{+1}_{-0}
Coated	46.2max	25.3min	13.0max

Note: With grass green epoxy coating

Characteristic

GRADE	AL (nH/N^2)	B (mT)	CORE LOSS (W)
		f=10kHz U=0.25V	H=250A/m f=25kHz T=100°C
DMR40	$3025 \pm 25\%$	≥ 315	≤ 7.50
DMR44	$3025 \pm 25\%$	≥ 315	≤ 6.85
DMR95	$4300 \pm 25\%$	≥ 315	≤ 6.54