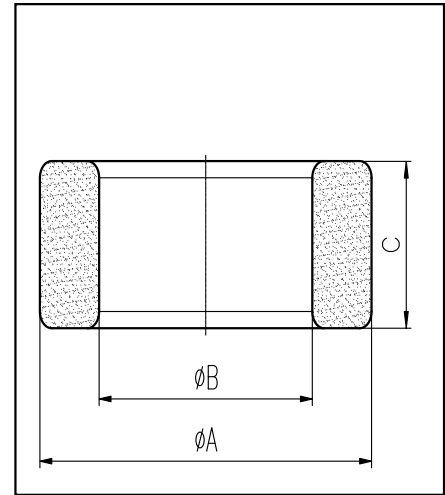


H cores

CORE SETS

Effective core parameters

SYMBOL	PARAMETER	VALUE	UNIT
$\Sigma (1/A)$	core factor (C_1)	0.89	mm^{-1}
V_e	effective volume	15694.00	mm^3
l_e	effective length	118.00	mm
A_e	effective area	133.00	mm^2
W_t	mass of core	≈ 81	g



尺寸	A	B	C
Coat			
Uncoat	48.0 ± 0.6	30.0 ± 0.5	15.0 ± 0.4
Coated	49.2max	29.0min	16max

Note: With grass green epoxy coating

Characteristic

GRADE	AL (nH/N^2)	B (mT)	CORE LOSS (W)
	$f=10\text{kHz}$ $U=0.25\text{V}$	$H=250\text{A}/\text{m}$ $f=25\text{kHz}$ $T=100^\circ\text{C}$	$f=100\text{kHz}$ $B=200\text{mT}$ $T=100^\circ\text{C}$
DMR40	$3100 \pm 25\%$	≥ 315	≤ 9.75
DMR44	$3100 \pm 25\%$	≥ 315	≤ 8.91
DMR95	$4448 \pm 25\%$	≥ 315	≤ 8.50