

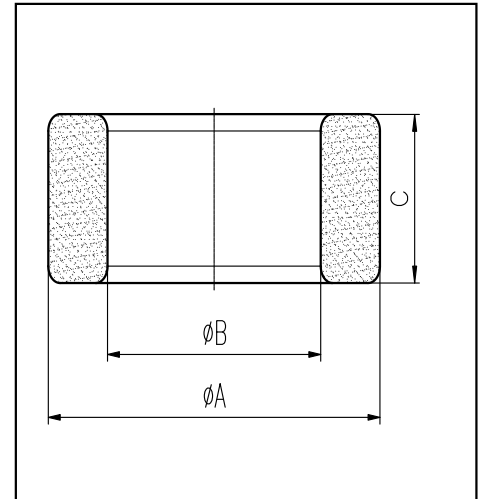
H cores

CORE SETS

Effective core parameters

SYMBOL	PARAMETER	VALUE	UNIT
$\Sigma (1/A)$	core factor (C_1)	0.76	mm^{-1}
V_e	effective volume	19803.00	mm^3
l_e	effective length	123.00	mm
A_e	effective area	161.00	mm^2
W_t	mass of core	≈ 99.5	g

尺寸	A	B	C
Coat			
Uncoat	49.0 ± 0.8	31.8 ± 0.6	19.0 ± 0.5
Coated	50.2max	30.8min	20.0max



Note: With grass green epoxy coating

Characteristic

GRADE	$AL (\text{nH}/\text{N}^2)$	$B (\text{mT})$	CORE LOSS (W)
		$f=10\text{kHz}$ $U=0.25\text{V}$	$H=250\text{A/m}$ $f=25\text{kHz}$ $T=100^\circ\text{C}$
DMR40	$3780 \pm 25\%$	≥ 315	≤ 12.0
DMR44	$3780 \pm 25\%$	≥ 315	≤ 11.0
DMR95	$5400 \pm 25\%$	≥ 315	≤ 10.5