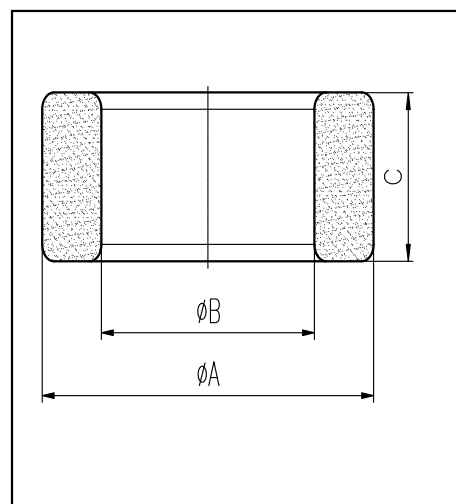


H cores

CORE SETS

Effective core parameters

SYMBOL	PARAMETER	VALUE	UNIT
$\Sigma (1/A)$	core factor (C_1)	0.45	mm^{-1}
V_e	effective volume	26160.00	mm^3
l_e	effective length	109.00	mm
A_e	effective area	240.00	mm^2
W_t	mass of core	≈ 144.0	g



尺寸	A	B	C
Coat			
Uncoat	50.0 ± 0.8	25.0 ± 0.6	20.0 ± 0.5
Coated	51.2max	24.0min	21.0max

Note: With grass green epoxy coating

Characteristic

GRADE	AL (nH/N^2)	B (mT)	CORE LOSS (W)
	$f=10\text{kHz}$ $U=0.25\text{V}$	$H=250\text{A}/\text{m}$ $f=25\text{kHz}$ $T=100^\circ\text{C}$	$f=100\text{kHz}$ $B=200\text{mT}$ $T=100^\circ\text{C}$
DMR40	$6370 \pm 25\%$	≥ 315	≤ 18.0
DMR44	$6370 \pm 25\%$	≥ 315	≤ 16.6
DMR95	$9100 \pm 25\%$	≥ 315	≤ 15.9