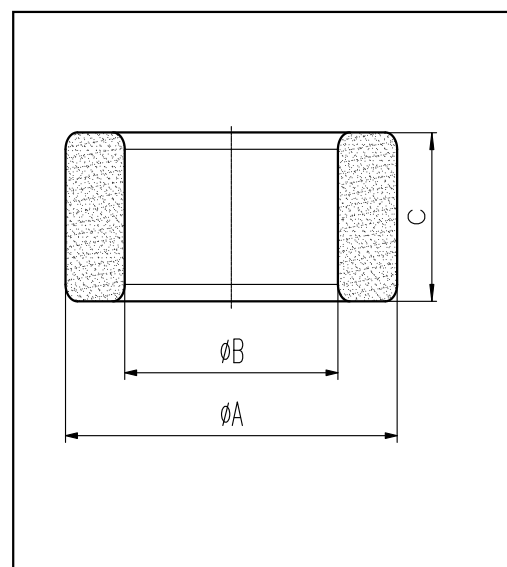


### H cores

#### CORE SETS

##### Effective core parameters

SYMBOL	PARAMETER	VALUE	UNIT
$\Sigma (1/A)$	core factor ( $C_1$ )	6.12	$\text{mm}^{-1}$
$V_e$	effective volume	23.52	$\text{mm}^3$
$l_e$	effective length	12.00	mm
$A_e$	effective area	1.96	$\text{mm}^2$
$W_t$	mass of core	$\approx 0.13$	g



尺寸	A	B	C
Coat			
Uncoat	$5.0 \pm 0.3$	$3.0 \pm 0.3$	$2.0 \pm 0.3$
Coated	5.7max	2.3min	2.7max

Note: With grass green epoxy coating

#### Characteristic

GRADE	AL (nH/N <sup>2</sup> )	B (mT)	CORE LOSS (W)
	$f=10\text{kHz}$ $U=0.25\text{V}$	$H=250\text{A/m}$ $f=25\text{kHz}$ $T=100^\circ\text{C}$	$f=100\text{kHz}$ $B=200\text{mT}$ $T=100^\circ\text{C}$
DMR40	$500 \pm 25\%$	—	—
DMR44	$500 \pm 25\%$	—	—