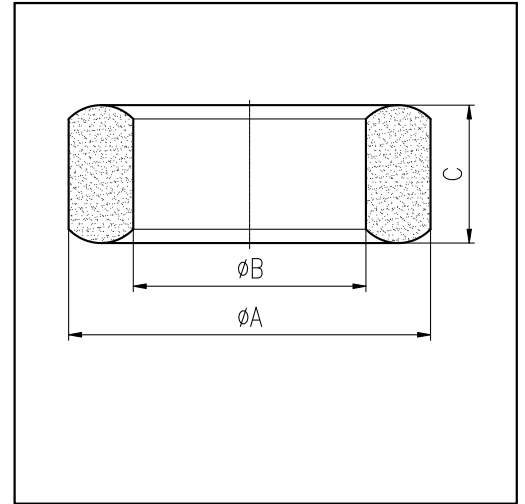


H cores

CORE SETS

Effective core parameters

SYMBOL	PARAMETER	VALUE	UNIT
$\Sigma (1/A)$	core factor (C_1)	0.49	mm^{-1}
V_e	effective volume	48510.00	mm^3
l_e	effective length	154.00	mm
A_e	effective area	315.00	mm^2
W_t	mass of core	≈ 268	g



尺寸	A	B	C
Coat			
Uncoat	65.0 ± 1.5	38.0 ± 0.8	25.0 ± 0.5
Coated	67.5max	36.5min	26.5max

Note: With grass green epoxy coating

Characteristic

GRADE	AL (nH/N^2)	B (mT)	CORE LOSS (W)
	$f=10\text{kHz}$ $U=0.25\text{V}$	$H=250\text{A/m}$ $f=25\text{kHz}$ $T=100^\circ\text{C}$	$f=100\text{kHz}$ $B=200\text{mT}$ $T=100^\circ\text{C}$
DMR40	$6000 \pm 25\%$	≥ 315	≤ 34.84
DMR44	$6000 \pm 25\%$	≥ 315	≤ 32.16