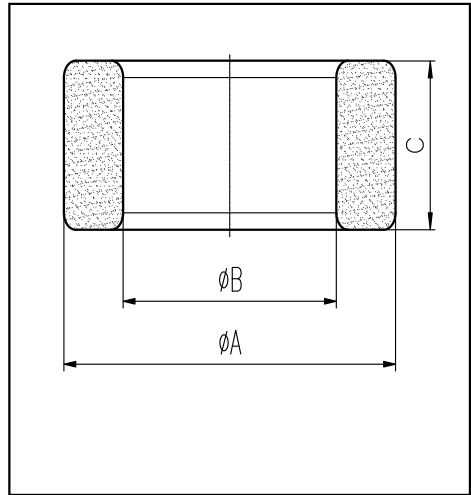


H cores

CORE SETS

Effective core parameters

SYMBOL	PARAMETER	VALUE	UNIT
$\Sigma (1/A)$	core factor (C_1)	1.04	mm^{-1}
V_e	effective volume	31494.00	mm^3
l_e	effective length	181.00	mm
A_e	effective area	174.00	mm^2
W_t	mass of core	≈ 159.7	g



尺寸	A	B	C
Coat			
Uncoat	73.66 ± 0.76	45.72 ± 0.76	12.7 ± 0.7
Coated	76.0max	47.0min	14.5max

Note: With grass green epoxy coating

Characteristic

GRADE	AL (nH/N^2)	B (mT)	CORE LOSS (W)
	$f=10\text{kHz}$ $U=0.25\text{V}$	$H=250\text{A/m}$ $f=25\text{kHz}$ $T=100^\circ\text{C}$	$f=100\text{kHz}$ $B=200\text{mT}$ $T=100^\circ\text{C}$
DMR40	$2780 \pm 25\%$	≥ 315	≤ 20.8