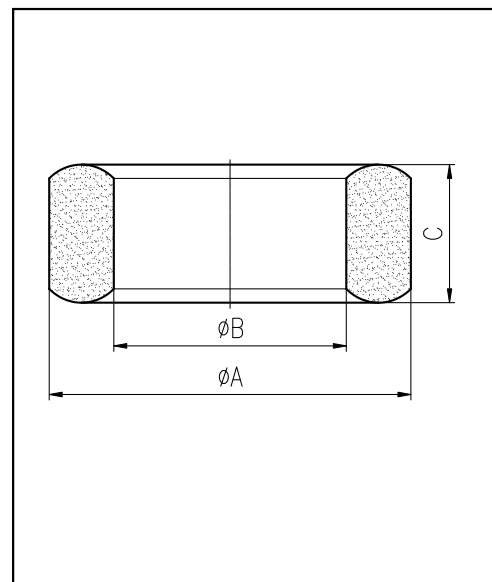


H cores

CORE SETS

Effective core parameters

SYMBOL	PARAMETER	VALUE	UNIT
$\Sigma (1/A)$	core factor (C_1)	3.22	mm^{-1}
V_e	effective volume	93.96	mm^3
l_e	effective length	17.40	mm
A_e	effective area	5.40	mm^2
W_t	mass of core	≈ 0.55	g



尺寸	A	B	C
Coat			
Uncoat	8.0 ± 0.2	4.0 ± 0.2	3.0 ± 0.2
Coated	8.7max	3.4min	3.6max

Note: With grass green epoxy coating

Characteristic

GRADE	AL (nH/N ²)	B (mT)	CORE LOSS (W)
	f=10kHz U=0.25V	H=250A/m f=25kHz T=100°C	f=100kHz B=200mT T=100°C
DMR40	$950 \pm 25\%$	—	—