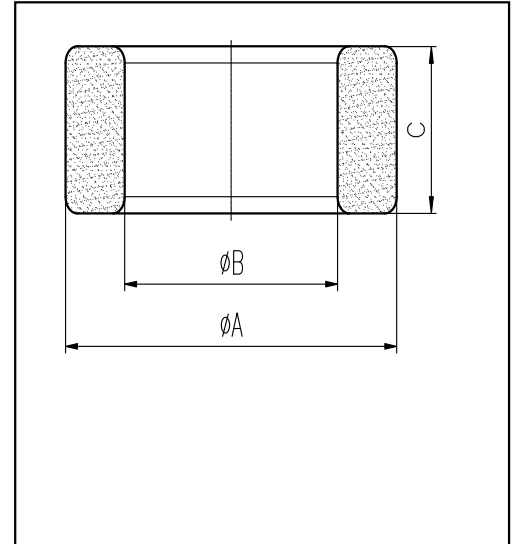


H cores

CORE SETS

Effective core parameters

SYMBOL	PARAMETER	VALUE	UNIT
$\Sigma (1/A)$	core factor (C_1)	3.57	mm^{-1}
V_e	effective volume	121.26	mm^3
l_e	effective length	20.80	mm
A_e	effective area	5.83	mm^2
W_t	mass of core	≈ 0.7	g



尺寸	A	B	C
Coat			
Uncoat	9.0 ± 0.2	5.0 ± 0.3	3.0 ± 0.2
Coated	9.7max	4.4min	3.6max

Note: With grass green epoxy coating

Characteristic

GRADE	AL (nH/N^2)	B (mT)	CORE LOSS (W)
		f=10kHz U=0.25V	H=250A/m f=25kHz T=100°C
DMR40	$810 \pm 25\%$	—	—
DMR44	$810 \pm 25\%$	—	—
DMR95	$1250 \pm 25\%$	—	—