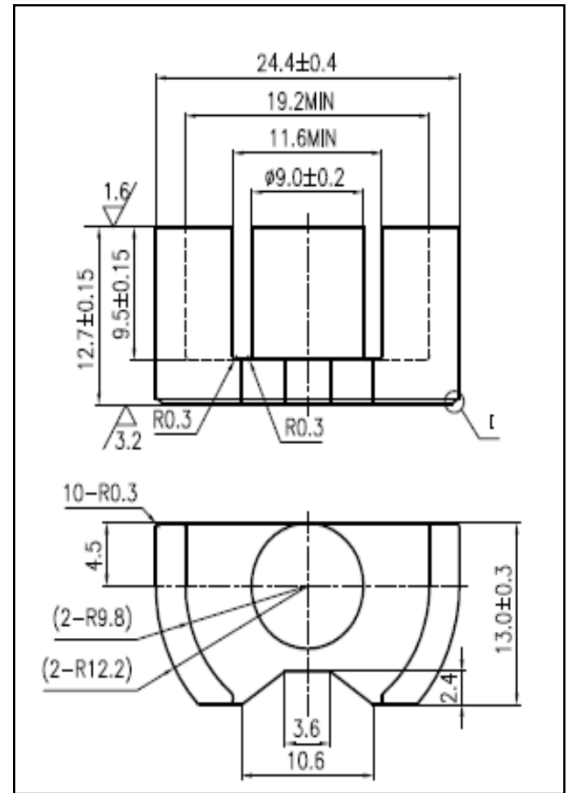


CORE SETS

Effective core parameters

SYMBOL	PARAMETER	VALUE	UNIT
$\Sigma (1/A)$	core factor (C_1)	0.75	mm^{-1}
V_e	effective volume	4000.40	mm^3
l_e	effective length	54.80	mm
A_e	effective area	73.00	mm^2
A_{min}	minimum area	63.62	mm^2
W_t	mass of core set	≈ 20.2	g



Characteristic

GRADE	AL (nH/N^2)	B (mT)	CORE LOSS (W)
	f=10kHz U=0.25V	H=250A/m f=25kHz T=100°C	f=100kHz B=200mT T=100°C
DMR40	$2400 \pm 25\%$	≥ 315	≤ 2.43
DMR44	$2400 \pm 25\%$	≥ 315	≤ 2.12
DMR47	$2500 \pm 25\%$	≥ 325	≤ 2.00