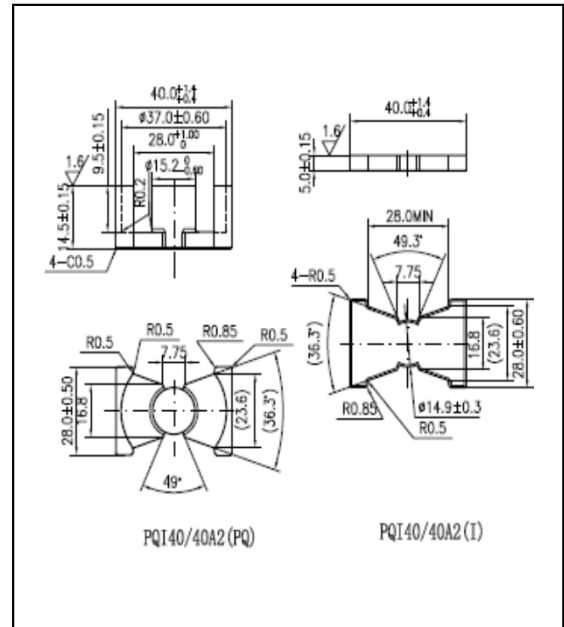


CORE SETS

Effective core parameters

SYMBOL	PARAMETER	VALUE	UNIT
$\Sigma (1/A)$	core factor (C_1)	0.30	mm^{-1}
Ve	effective volume	11490.93	mm^3
le	effective length	58.30	mm
Ae	effective area	197.10	mm^2
Amin	minimum area	181.46	mm^2
Wt	mass of core set	≈ 59.8	g



Characteristic

GRADE	AL (nH/N ²)	B (mT)	CORE LOSS (W)
	f=10kHz U=0.25V	H=250A/m f=25kHz T=100°C	f=100kHz B=200mT T=100°C
DMR95	8800 ± 25%	≥ 315	≤ 6.32